





BUILT TOUGH



We understand the needs of trade professionals. Whether you're a construction worker, electrician, plumber or emergency responder, we offer high-quality lighting solutions, a range of tools and durable workwear designed to enhance safety and efficiency on the job!



CONTENTS

SITE LIGHTS

Durable lights fit for any jobsite Pages 4 - 9

WORK LIGHTS

Focused and functional lights Pages 10 - 15

INSPECTION LIGHTS

High-accuracy lighting for detailed tasks Pages 16 - 21

HEADTORCHES

Hands free and precise lights Pages 22 - 27

FLASHLIGHTS

Compact lights for portable use Pages 28 - 31

MISC LIGHTS

An array of multi purpose lighting Pages 32 - 37

HIGH CRI LIGHTS

Colour accurate rendering lights Pages 38 - 41

ATEX LIGHTS

Suitable for use in hazardous areas Pages 42 - 45

TOOLS

A variety of durable equipment Pages 46 - 63

ACCESSORIES

Accessories to enhance performance Pages 64 - 67

CLOTHING

Durable yet fashionable workwear Pages 68 - 71

| SITE LIGHTS



| MTB-5300



MTB-10000 | MULTI BATTERY 360° SITE LIGHT

- 10000 lumen 6500K SMD LEDs
- Multiple colour temperatures - CCT: 2700k / 3500k / 4500k / 5500k / 6500k
- Takes up to 20V 6.0Ah batteries from Milwaukee, De Walt, Makita & Metabo - 4 adapters included
- Secure battery compartment cover (note: larger 5.5Ah-6.0Ah batteries may need to be used without cover)
- Super tough heavy duty nylon & polycarbonate construction
- Milky diffuser lens for even light dispersion
- Easy carry rubber grip handle
- Concealed fold-out ultra tough steel hanging hook in base
- 2 screw holes in base for attaching magnets
- Heavy duty IK08 Shock proof
- Smart Memory Switch - remember last mode used
- 5 x Battery level & charging indicators
- Unilite 14.8V 5.2Ah battery available to purchase separately

BATTERY Not included, bare tool
WEIGHT 3650g
DIMENSIONS W 278 x H 256 x D 333mm

NOTE: runtimes are based on using the Unilite 14.8V 5.2Ah battery. Runtimes with other batteries will vary.

LUMEN 10000LM | **RUNTIME** approx 1-10H | **BEAM** 89M | **IP RATING** IP65/IK08

MTB-5300 | MULTI BATTERY 'HYBRID' SITE LIGHT

- 5300 lumen 50W 6500K COB LED
- Dual Power - rechargeable & mains powered
- Takes up to 20V 6.0Ah batteries from Milwaukee, De Walt, Makita & Metabo - 4 adapters included
- Secure battery compartment cover (note: larger 5.5Ah-6.0Ah batteries may need to be used without cover)
- Super tough heavy duty nylon construction
- Easy carry rubber grip handle
- 180° Rotating stand with holes for attaching tripod/magnet
- 4 x dim settings: 650 / 1350 / 2700 / 5300 lumen
- IP65 Dust & water resistant / IK07 Shock proof
- Memory Switch - remember last mode used
- Automatic switch-over from mains to battery in the event of power failure (battery installation required) for added safety
- 2A USB Powerbank - works with any battery Installed
- 4 x Battery level & charging indicators
- Comes with 5 metre heavy duty 24V-2.7A H05RN-F power lead/charger (includes UK, EU, US & AU plugs)
- Unilite 14.8V 5.2Ah battery available to purchase separately (NOTE: Only Unilite battery can be charged via the lamp)

BATTERY Not included, bare tool
WEIGHT 1250g
DIMENSIONS W 238 x H 257 x D 181mm

NOTE: runtimes are based on using the Unilite 14.8V 5.2Ah battery. Runtimes with other batteries will vary.

LUMEN 5300LM | **RUNTIME** approx 2.5-16H | **BEAM** 95M | **IP RATING** IP65/IK07

MTB-5000 | MULTI BATTERY SITE LIGHT

- 5000 lumen 6500K SMD LEDs
- Multiple colour temperatures - CCT: 2700k / 3500k / 4500k / 5500k / 6500k
- Takes up to 20V 6.0Ah batteries from Milwaukee, De Walt, Makita & Metabo - 4 adapters included
- Secure battery compartment cover (note: larger 5.5Ah-6.0Ah batteries may need to be used without cover)
- Super tough heavy duty nylon & TPR construction
- Milky diffuser lens for even light dispersion
- Easy carry rubber grip handle
- 150-degree rotating stand with hole for attaching tripod/magnet and feet that act as a hanging bracket
- IP65 Dust & water resistant
- Super heavy duty IK10 Shock proof
- Smart Memory Switch - remember last mode used
- 5 x Battery level & charging indicators
- Unilite 14.8V 5.2Ah battery available to purchase separately

BATTERY Not included, bare tool
WEIGHT 1980g
DIMENSIONS W 280 x H 280 x D 148mm

NOTE: runtimes are based on using the Unilite 14.8V 5.2Ah battery. Runtimes with other batteries will vary.

LUMEN 5000LM | **RUNTIME** approx 2-15H | **BEAM** 49M | **IP RATING** IP65/IK10





TL-6000 | SUPER TOUGH TRIPOD LIGHT

- 6000 lumen 6500K SMD LEDs
- Multiple colour temperatures - CCT: 2700k / 3500k / 4500k / 5500k / 6500k
- Dual Power - rechargeable & mains powered
- 2 Independent heads fold-out 90° and pivot 330° for light direction where its required
- Super tough heavy duty nylon, polycarbonate & aluminium construction
- Quick release set-up & fold for rapid deployment
- Extends to 2.24m & folds down to 1.2m
- Smart Memory Switch - remembers last mode used
- High capacity 14.8V 5200mAh Li-ion battery
- 5 x Battery level and charging indicators
- Mains 20V-11A multi-country charger/power lead included (inc UK, EU, US & AU adaptors)
- Quick 4.5 hour charge time

BATTERY 14.8v 5200mAh Li-ion
WEIGHT 4400g
DIMENSIONS Folded: W 142 x H 1200 x D 142mm

LUMEN 6000LM | RUNTIME 2-16H | BEAM 64M | IP RATING IP65/IK07

SLR-5500 | RECHARGEABLE SITE LIGHT

- 5500 lumen 50W white SMD LEDs, 6500k
- High power 7.4v 7500mAh Li-ion battery
- Removable battery with powerful 2A USB power bank with battery level and charging indicators
- Dual Power - rechargeable & mains powered
- Tough aluminium & polycarbonate construction
- Glow-in-the-Dark strip around reflector
- Anti-slip rubber grip handle
- Adjustable head to change light angle
- Acrylic LED diffuser for even light dispersion
- Super strong magnetic base
- Mains 12V-2A multi-country charger/power lead included (inc UK, EU, US & AU adaptors)
- 4-5 hours charge time

BATTERY 7.4v 7500mAh Li-ion Battery Pack
WEIGHT 2200g
DIMENSIONS 215 x 192 x 285mm

LUMEN 5500LM | RUNTIME 3-6H | BEAM 54M | IP RATING IP54

RL-5250 | INDUSTRIAL 360° LED LANTERN

- 5250 lumen 50W 160 x SMD LEDs, 6500k
- Dual Power - rechargeable & mains powered
- 360° and 180° Lighting modes
- Ultra tough nylon polymer construction
- Milky polycarbonate diffuser for even light dispersion
- Stainless steel carry handle on the top
- Concealed ultra tough hanging hook in the base
- Screw hole in the base for attaching to tripods
- High power 11.1v 5200mAh Li-ion battery
- Battery level and charging indicators
- Mains 15V-1.5A multi-country charger/power lead included (inc UK, EU, US & AU adaptors)
- Fast 3.5 hours charge time

BATTERY 11.1v 5200mAh Li-ion
WEIGHT 1820g
DIMENSIONS Ø157.5 x H 285.6 mm

LUMEN 5250LM | RUNTIME 2-16H | BEAM 44M | IP RATING IP65/IK07

RF-5400 | SUPER TOUGH SITE LIGHT

- 5400 lumen 50W 6500k SMD LEDs
- Top quality LEDs with up to 100,000 hour lifespan
- Dual Power - rechargeable and mains powered
- Super tough heavy duty nylon construction
- Glare-free milky lens for extensive light spread
- 180° adjustable stand/handle with holes for tripod/magnet
- Memory switch - remembers last mode used
- IK09 shock proof and 2m drop resistant
- 5 x Battery level and charging indicators
- Mains 15V 1.5A multi-country charger/power lead included (inc UK, EU, US & AU adaptors)
- Quick 3.5 hour charge time
- Magnet attachment and tripods available (not included)

BATTERY 11.1v 5200mAh Li-ion
WEIGHT 1450g
DIMENSIONS 273 x 205 x 81mm

LUMEN 5400LM | RUNTIME 2-16H | BEAM 56M | IP RATING IP65/IK09





| WORK LIGHTS



| K-550



CL-1700 | HEAVY DUTY CLAMP WORK LIGHT

- 1700 lumen 15W white 6500k COB LED
- Ultra tough nylon & TPE over-moulded housing
- Incredibly strong jaw clamp to attach almost anywhere
- Extra strong magnet on base with 4 non-slip rubber feet
- Clamp handles allow the lamp to stand-up in various positions
- Light head lifts up/down 270° & rotates around 340°
- Smart memory switch - remembers last used mode
- IK07 super tough construction
- Over-charge & over-discharge protection
- 3 battery level & charging indicators
- Low battery warning 3x flash - reminds to charge
- Supports 'PD' power delivery fast charging
- Faster 3A USB-C charging - 5 hour charge time
- 1m high quality USB-C cable included

BATTERY	3.7v 5200mAh Li-ion
WEIGHT	626.5g
DIMENSIONS	176 x 100 x 94mm

LUMEN 1700LM | RUNTIME 3-22H | BEAM 53M | IP RATING IP65/IK07



HX-1080 | HEAVY DUTY HEXAGON WORK LIGHT

- 1080 Lumen 10W white COB LED, 6500k
- Ultra tough heavy duty nylon, aluminium & TPE over-moulded housing
- Fold-out 360 degree swivel finger loop for easy holding
- Extra strong magnetic 120 degree fold-out stand
- Convenient press & hold smooth dimming function
- IK07 super tough construction
- IP65 dust & water resistant
- High quality 3.7v 2600mAh Li-ion battery
- Over-charge and over-discharge protection
- 3 Colour battery level indicator
- Green flash to green charging indicator
- Low battery warning 3x flash - reminds to charge
- Supports 'PD' Power Delivery fast charging
- Fast 2A USB-C charging - 4 hour charge time
- 1m High quality USB-C cable included

BATTERY	3.7v 2600mAh Li-ion
WEIGHT	220g
DIMENSIONS	106.3 x 93.7 x 40.5mm

LUMEN 1080LM | RUNTIME 2.5-8H | BEAM 44M | IP RATING IP65/IK07



SLR-1750 | WORK LIGHT WITH POWERBANK

- 1750 lumen white COB LED, 6500k
- Red LED modes for emergency / signalling / night vision
- Built-in USB power bank with multiple intelligent outputs - 5V-3A / 9V-2A / 12V-1A
- Super tough copolymer and aluminium construction
- 180° rotating handle/stand with carabiner snap hook
- Strong magnets within the stand
- Glow-in-the-dark strip for extra visibility
- Super high power 'LG' 10,400mAh battery
- Battery level and charging indicators
- Faster 4 - 4.5 hour USB-C charging with multiple inputs - 5V-3A / 9V-2A
- 1m high quality USB-C cable included

BATTERY	3.7v 10,400mAh Li-ion
WEIGHT	600g
DIMENSIONS	folded 158 x 102 x 55mm / extended 268 x 102 x 48mm

LUMEN 1750LM | RUNTIME 4.5-195H | BEAM 50M | IP RATING IPX5



SLR-1450 | COMPACT WORK LIGHT

- 1450 lumen white COB LED, 6500k
- With 150 lumen 6500k white LED flashlight
- Plus 45 lumen Red and Red flash modes
- Powerful 'LG' 3.7v 5000mAh 21700 Li-ion battery
- Super tough copolymer and aluminium construction
- 180° rotating handle/stand with carabiner snap hook
- Strong magnets within the stand
- Glow-in-the-dark strip for extra visibility
- Battery level and charging indicators
- 2A USB-C charging - 3 hour charge time
- 1m high quality USB-C cable included
- Battery can be removed so a convenient spare can be kept at hand
- 21700 battery has its own USB-C port so is easily charged out of the lamp and used as a separate powerbank

BATTERY	3.7v 5000mAh 21700 Li-ion
WEIGHT	288g
DIMENSIONS	folded 122.5 x 50.5 x 50.5mm / extended 219 x 50.5 x 50mm

LUMEN 1450LM | RUNTIME 3-90H | BEAM 53M | IP RATING IPX5



K-550 | COMPACT MINI WORK LIGHT

- 550 lumen 5.7W white 6500K COB LED
- Press & Hold Turbo mode with additional red modes - 6 different lighting modes
- Ultra tough nylon & polycarbonate construction
- Super compact and lightweight size
- 160° rotating stand with strong magnet
- Smart Memory - remembers last mode used
- Glow-in-the-Dark strip around LED
- Comes with a carabiner and handy storage bag
- Powerful 3.7v 1200mAh li-polymer battery
- Useful battery level & charging indicators
- Fast 1A USB-C charging - 1.5 hour charge time
- 30cm USB-C charging cable included

BATTERY	3.7v 1200mAh Li-polymer
WEIGHT	74g
DIMENSIONS	54 x 28 x 60mm

*550 lumen is on Turbo mode and operates by 'press & hold' switch with 1 hour total runtime. High mode is 375 lumen with 3 hour runtime.

LUMEN 550LM | RUNTIME 1*-28H | BEAM 29M | IP RATING IPX6

| INSPECTION LIGHTS

| IL-175R
| IL-375R
| IL-925R





IL-925R | FOLDING INSPECTION LIGHT

- 925 lumen white COB LED, 6500k
- Secondary rear 475 lumen white COB LED, 6500k
- Extra top torch - 150 lumen SMD LED, 6500k
- Compact hand-held and pocket size
- Memory function - remembers last mode used
- 180° vertical folding head
- Super tough aluminium & nylon construction
- IK07 shock resistant - 2m drop resistant

- Super strong magnetic base
- IP54 dust & water resistant
- Battery level & charging indicators
- 1A USB-C charging - 4 hour charge time
- 1m high quality USB-C cable included

BATTERY 3.7v 2600mAh Li-ion
WEIGHT 193g
DIMENSIONS Folded 162 x 40 x 29 mm / Extended 304 x 33 x 29 mm

LUMEN 925LM | **RUNTIME** 2.5-9H | **BEAM** 41M | **IP RATING** IP54/IK07

IL-425R | FOLDING INSPECTION LIGHT

- 425 lumen white COB LED, 6500k
- Secondary rear 150 lumen white SMD LED, 6500k
- Extra top torch - 80 lumen SMD LED, 6500k
- Ultra lightweight compact pocket size
- 180° vertical folding head
- Super tough aluminium & nylon construction
- Useful pocket clip

- Super strong magnetic base
- IK07 shock resistant - 2m drop resistant
- Low battery 3x warning flash - reminds when charging is needed
- Quick 1A USB-C charging - 3 hour charge time
- 1m high quality USB-C cable included

BATTERY 3.7v 1100mAh Li-ion
WEIGHT 105g
DIMENSIONS Folded 147 x 33.5 x 21 mm / Extended 279 x 33.5 x 21 mm

LUMEN 425LM | **RUNTIME** 3-6.5H | **BEAM** 31M | **IP RATING** IP20/IK07

IL-375R | FOLDING INSPECTION LIGHT

- 375 lumen white COB LED, 6500k
- Secondary rear 250 lumen white COB LED, 6500k
- Extra top torch - 100 lumen SMD LED, 6500k
- Ultra lightweight compact pocket size
- Memory function - remembers last mode used
- 180° vertical folding head
- Super tough nylon and aluminium construction

- Useful pocket clip
- Strong magnetic base and dual rear magnets
- Low battery 3x warning flash - reminds when charging is needed
- Quick 1A USB-C charging - 3 hour charge time
- 1m high quality USB-C cable included

BATTERY 3.7v 1100mAh Li-ion
WEIGHT 80.8g
DIMENSIONS Folded 156 x 33 x 20.6 mm / Extended 298 x 26 x 20.6 mm

LUMEN 375LM | **RUNTIME** 3-6H | **BEAM** 26M | **IP RATING** IP54/IK07

IL-175R | FOLDING INSPECTION LIGHT

- 175 lumen white COB LED, 6500k
- Secondary rear 150 lumen white COB LED, 6500k
- Extra top torch - 70 lumen SMD LED, 6500k
- Ultra lightweight compact pocket size
- Memory function - remembers last mode used
- 180° vertical folding head
- Super tough nylon and aluminium construction
- Useful pocket clip

- Strong magnetic base and dual rear magnets
- Low battery 3x warning flash - reminds when charging is needed
- Quick 1A USB-C charging - 2.5 hours charge time
- 1m high quality USB-C cable included

BATTERY 3.7v 350mAh Li-ion
WEIGHT 60g
DIMENSIONS Folded 111.5 x 19.2 mm / Extended 225 x 19.2 mm

LUMEN 175LM | **RUNTIME** 3-6H | **BEAM** 21M | **IP RATING** IP20/IK07





IL-SIG1 | SIGNALLING INSPECTION LIGHT

- 1100 lumen white 10W SMD LEDs, 6500k
- Red / Amber / Green SMD LEDs for signalling
- Coloured LEDs have static & 2Hz flash modes
- 4 Independent switches for easy operation
- 220 lumen white 6500k SMD LED top torch
- Super tough aluminium & polycarbonate
- Built-in aluminium heat sink on the back
- Rotating hanging hook with magnets
- Multi-positional fold-out kick stand/hook

BATTERY 3.7v 4400mAh Li-ion
WEIGHT 334g
DIMENSIONS 205 x 60 x 42mm

LUMEN 1100LM | **RUNTIME** 3.5-30H | **BEAM** 61M | **IP RATING** IP54



IL-625R | INSPECTION LIGHT

- 625 lumen white 5W COB LED, 6500k
- 250 lumen white 3W SMD LED spot beam torch
- 395nm UV LED on the front
- Super tough aluminium & polycarbonate
- Rear magnetic pocket clip
- Strong integral magnets on back & base
- Glow-in-the-dark strip around LED
- Battery level & charging indicators
- Battery level and charging indicators
- High power 3.7v 2500mAh Li-ion battery
- 1A USB-C charging - 3 hour charge time
- 1m USB-C charging cable included

BATTERY 3.7v 2500mAh Li-ion
WEIGHT 190g
DIMENSIONS 188 x 35 x 35mm

LUMEN 625LM | **RUNTIME** 3-12H | **BEAM** 46M | **IP RATING** IP65/IK07



PL-3 | INSPECTION PENLIGHT

- 500 lumen white SMD LEDs, 6500k
- Die cast aircraft grade aluminium construction
- Convenient compact pocket size
- Easy press rubberised micro-switch
- 3 Light mode settings
- Strong magnetic base
- Useful rear aluminium pocket clip
- IPX4 water resistant
- 1m drop resistant

BATTERY 3 x 1.5v AAA Alkaline Batteries (inc.)
WEIGHT 57g (without batteries)
DIMENSIONS 154 x 15 x 21.5mm

LUMEN 500LM | **RUNTIME** 2.5-16H | **BEAM** 28M | **IP RATING** IPX4

| HEAD TORCHES



| HL-4R



HT-1600R | SUPER BRIGHT POWERBANK HEAD TORCH

- 1600 lumen 6500K white LEDs
- Easy twist smooth dimming switch
- White spot beam & flood beam LEDs
- Red LEDs for night vision & emergency/signalling
- 60° Rotating head angle
- Adjustable non-slip silicone lined headbands
- Smart Memory - remembers last white mode used
- IPX5 water resistant
- Hard-shell protective zipped storage case included
- 1m High quality USB-C Charging cable included
- 2 x 21700 5000mAh Li-ion batteries
- Parallel circuitry (can run on 1 or 2 batteries)
- Useful battery level & charging indicators
- Fast 5V-3A USB-C charging - 5 hr charge time
- Battery pack can be completely detached & used as an independant powerbank (5V-3A output)
- Each 21700 battery is also its own independant power bank

BATTERY 2 x 3.7v 21700 5000mAh Li-ion
WEIGHT 392g (with 2 batteries)
DIMENSIONS Headtorch 40 x 65 x 35.5mm Battery pack 50 x 106 x 30mm

LUMEN 1600LM | **RUNTIME** 8-38H | **BEAM** 128M | **IP RATING** IPX5



PS-HDL9R | HIGH POWER INDUSTRIAL HEADTORCH

- 750 lumen white CREE LED, 6500k
- Red rear battery pack light (ON & FLASH)
- Intelligent parallel circuitry - works with 1 or 2 batteries
- Anti-dazzle retractable light shield
- Super wide angle light spread
- Easy twist smooth dimming power switch
- 45° rotational head
- Super tough construction with top quality cables
- Adjustable non-slip silicone lined headband included
- Fast 2A USB-C charging - 3.5 hours charge time
- Useful battery level and charging indicators
- 1m USB-C charging cable included
- Presented in an EVA hard shell zipped case

BATTERY 2 x 3.7v 2000mAh 18650 Li-ion (inc.)
WEIGHT 275g (with 2 batteries)
DIMENSIONS Headtorch 38 x 60 x 45mm / Battery pack 65 x 90 x 45mm

LUMEN 750LM | **RUNTIME** 4-260H | **BEAM** 100M | **IP RATING** IPX6



HT-650R | DUAL POWER DUAL LED HEADTORCH

- 650 lumen white COB LED, 6500k
- Circular COB LED for wide flood lighting
- Additional 450 lumen CREE LED spot beam, 6500K
- Dual Power - rechargeable or 3 x AAA batteries
- Memory function - remembers last mode used
- Super tough construction with rubberised coating
- 60° rotational head
- Adjustable non-slip silicone lined headband included
- IK07 shock proof - 2m drop resistant
- Rechargeable 3.8v Li-Po battery included
- Red-to-Green charging indicator on battery
- Fast 1A USB-C charging - 3.5 hours charge time
- 1m USB-C charging cable included

BATTERY 3.8v 1100mAh Li-Polymer Battery (inc.) or 3 x AAA Alkaline Batteries (not inc.)
WEIGHT 89g
DIMENSIONS Headtorch 46.3 x 68.7 x 40mm

LUMEN 650LM | **RUNTIME** 2-30H | **BEAM** 48M | **IP RATING** IP65/IK07



HL-8R | DUAL BEAM SENSOR HEADTORCH

- 475 lumen white SMD LEDs, 6500k
- 2 x Side SMD LEDs for wide flood lighting
- 250 lumen SMD LED for long distance spot beam
- Sensor mode for hands-free operation
- Memory function - remembers last mode used
- Super tough construction with rubberised coating
- IK07 shock resistant
- IP65 dust & water resistant
- 1m impact resistant
- 60° rotational head
- Adjustable non-slip silicone headband included
- Green flash-to-Green charging indicator light
- Fast 1A USB-C charging - 2.5 hours charge time
- 1m USB-C charging cable included

BATTERY 3.7v 1500mAh Li-Polymer
WEIGHT 111g
DIMENSIONS Headtorch 47.5 x 78.5 x 46mm

LUMEN 475LM | RUNTIME 4-35H | BEAM 90M | IP RATING IP65/IK07

PS-HDL6R | DUAL POWER HELMET HEADTORCH

- 350 lumen white SMD LEDs, 6500k
- Network Rail Approved
- Dual Power - rechargeable battery included or 3 x AAA batteries
- 3M VHB adhesive helmet mount (included)
- Adjustable non-slip silicone lined headband included
- Anti-dazzle retractable light shield
- 45° rotational head
- 3 x AAA battery cartridge included
- Battery level & charging indicator
- Direct charging removable battery - 1A USB-C with 4 hour charge time
- Spare batteries can be purchased separately
- 1m USB-C charging cable included

BATTERY 3.7v 1800mAh Li-Polymer (inc.) or 3 x AAA Battery Cartridge (batteries not incl.)
WEIGHT 86g (with lithium battery) / 94g (with 3 x AAA batteries)
DIMENSIONS Headtorch 50 x 65 x 45mm

LUMEN 350LM | RUNTIME 2-59H | BEAM 27M | IP RATING IPX6

HL-4R | USB HELMET HEADTORCH

- 275 lumen white CREE LED, 6500k
- 2 x 5mm red LEDs for night vision - static & flashing
- Easy push micro switch
- 45° Rotational head
- Ultra-smooth reflector for long distance beam
- Super-lightweight design
- Strong ABS housing - 1m impact resistant
- Adjustable non-slip silicone lined headband included
- 3M VHB adhesive helmet mount included
- Useful drawstring carry pouch included
- Red-to-Green charging indicator
- Fast 1A USB-C charging - 2.5 hour charge time
- 1m USB-C charging cable included

BATTERY 3.7v 1800mAh Li-Polymer
WEIGHT 78g
DIMENSIONS Headtorch 63 x 40 x 42mm

LUMEN 275LM | RUNTIME 6.5-170H | BEAM 95M | IP RATING IPX5

PS-HDL2 | HELMET HEADTORCH

- 200 lumen white CREE LED, 6500k
- 2 x 5mm LEDs for floodlight modes
- Easy push micro switch
- Ultra-smooth reflector for long distance beam
- 45° rotational head
- 3 x AAA Energizer alkaline batteries included
- Super lightweight design
- Strong ABS housing
- 1m impact resistant
- IPX6 water resistant
- Adjustable non-slip silicone lined headband included
- 3M VHB adhesive helmet mount included

BATTERY 3 x 1.5v AAA Energizer Alkaline Batteries (inc.)
WEIGHT 88g (with batteries)
DIMENSIONS Headtorch 47 x 62 x D 37mm

LUMEN 200LM | RUNTIME 5-185H | BEAM 95M | IP RATING IPX6





| FLASHLIGHTS



| F-2700



F-2700 | USB ALUMINIUM FLASHLIGHT

- 2700 lumen white LED, 6500k
- Hard anodized die cast matte aluminium body
- Tactical rubberised tail switch
- 4 light modes and 8Hz defence strobe
- Flawless smooth reflector for long distance beam
- IP68 dust and waterproof - 1m submersible
- Impact resistant to 2m
- Built-in concealed USB-C charging port

- Battery level and charging indicator LED
- Circuit Protection prevents battery from over-charging or over-discharging
- 2A USB-C charging - 3 hour charge time
- High quality USB-C charging cable inc. (0.5m)
- Safety nylon wrist strap included

BATTERY 3.6v 5000mAh 21700 Li-ion (inc.)
WEIGHT 210g (with li-ion battery) / 138g (without battery)
DIMENSIONS 153 x Ø 33x Ø 28mm

LUMEN 2700LM | RUNTIME 3-45H | BEAM 218M | IP RATING IP68

F-1400 | DUAL POWER ALUMINIUM FLASHLIGHT

- 1400 lumen white LED, 6500k
- Hard anodized die cast matte aluminium body
- 4 light modes and 8Hz defence strobe
- Flawless smooth reflector for long distance beam
- IP68 dust and waterproof - 1m submersible
- Built-in concealed USB-C charging port
- Battery level and charging indicator LED

- Circuit Protection prevents battery from over-charging or over-discharging
- 1A USB-C charging - 2.5 hour charge time
- High quality USB-C charging cable inc. (0.5m)
- Can also work with 2 x CR123A lithium batteries (not inc.)
- Safety nylon wrist strap included

BATTERY 3.6v 2600mAh 18650 Li-ion (inc.) / or 2 x CR123A batteries (not inc.)
WEIGHT 157g (with li-ion battery) / 109g (without battery)
DIMENSIONS 140 x Ø 30x Ø 25mm

LUMEN 1400LM | RUNTIME 2.5-23H | BEAM 180M | IP RATING IP68

FR-1200 | DUAL POWER RIGHT ANGLE FLASHLIGHT

- 1200 lumen white LED, 6500k
- Hard anodized die cast matte aluminium body
- Head rotates to 90-degree angle
- Useful pocket clip and strong magnetic base
- 3 Light mode settings
- Flawless smooth reflector for long distance beam
- Battery level and charging indicator under the switch

- Circuit Protection prevents battery from over-charging or over-discharging
- 1A USB-C charging - 2.5 hour charge time
- High quality USB-C charging cable inc. (0.5m)
- Can also work with 2 x CR123A lithium batteries (not inc.)

BATTERY 3.6v 2600mAh 18650 Li-ion (inc.) / or 2 x CR123A batteries (not incl.)
WEIGHT 209g (with li-ion battery) / 161g (without battery)
DIMENSIONS Extended length 160.5 x Ø 30x Ø 27mm

LUMEN 1200LM | RUNTIME 3-14H | BEAM 180M | IP RATING IP65

FR-400 | RIGHT ANGLE USB FLASHLIGHT

- 400 lumen white LED, 6500k
- Hard anodized die cast matte aluminium body
- Head rotates to 90-degree angle
- Useful pocket clip and strong magnetic base
- Rubberised easy press side switch
- 2 light mode settings
- Frosted lens for smoother beam spread
- Impact resistant to 2m

- Built-in rubberised USB-C charging port
- Battery level and charging indicator under the switch
- Circuit Protection prevents battery from over-charging or over-discharging
- 1A USB-C charging - 2.5 hour charge time
- High quality USB-C charging cable inc. (0.5m)

BATTERY 3.7v 750mAh 10900 Li-ion (inc.)
WEIGHT 90g (with li-ion battery) 69g (without battery)
DIMENSIONS Extended length 161.5 x Ø 19x Ø 17mm

LUMEN 400LM | RUNTIME 2-8H | BEAM 60M | IP RATING IP65



| MISC LIGHTS



| L-1800



SPL-350 | SPIRIT LEVEL WITH WORKLIGHT

- 350 lumen LED spirit level worklight
- Light-up spirit level vial & red laser pointer
- Tough ABS & aluminium construction
- Glow-in-the-dark strip around the LED
- Strong rear & side magnets
- Strong holster with belt clip
- Smart memory - remembers last mode used
- IPX4 water resistant
- High quality 3.7v 800mAh Li-ion battery
- Battery level & charging indicator
- Low battery warning flash - reminds to charge
- Fast 2A USB-C charging - 1.5 hr charge time
- 1m High quality USB-C charging cable included

BATTERY	3.7v 800mAh Li-ion
WEIGHT	177g
DIMENSIONS	55 x 90 x 20mm

LUMEN 350LM | RUNTIME 1-25H | BEAM 23M | IP RATING IPX4

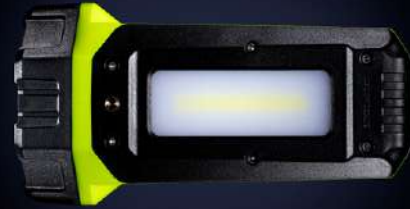


FLX-125 | TELESCOPIC MAGNETIC PICK-UP LIGHT

- 125 Lumen white 6000k SMD LED
- Extending telescopic handle with flexible gooseneck for reaching into tight spaces
- Strong magnet around LED for use as a pick-up tool
- Extends from 177mm to 505mm
- Ultra lightweight compact pocket size
- Super tough nylon & aluminium construction
- Smart memory switch - remembers last used mode
- Useful pocket clip & super strong magnetic base
- IK09 super tough construction
- IP65 dust & water resistant
- Over-charge & over-discharge protection
- 3 colour battery level indicator
- Green flash-to-green charging indicator
- Fast 2A USB-C charging - 2.5 hour charge time
- 0.5m high quality USB-C cable included

BATTERY	3.7v 180mAh Li-ion
WEIGHT	88.8g
DIMENSIONS	177 x Ø21 x Ø17.5mm (closed) 522 x Ø21 x Ø17.5mm (extended)

LUMEN 125LM | RUNTIME 2-6H | BEAM 13M | IP RATING IP65/IK09



L-1800 | DUAL LED LANTERN

- 1800 Lumen white spot beam LED, 6500k
- Additional 1000 lumen COB LED floodlight, 6500k
- Red static & red flashing modes
- Super tough polycarbonate, ABS & aluminium construction
- Easy press dual switches for easy mode selection
- Threaded hole in the base for attaching to tripods
- Glow-in-the-Dark strip around reflector
- Convenient shoulder carry strap included
- Battery level & charging indicator LEDs
- Super high power 18,000mAh Li-ion battery

BATTERY 3.7v 18,000mAh Li-ion
WEIGHT 773g
DIMENSIONS 108 x 200 x 131mm

- Multiple USB power bank outputs - 5V-3A / 9V-2A / 12V-1A
- Intelligent multiple USB-C charging inputs - 5V-3A / 9V-2A
- Faster 2A and 3A charging - 8 or 7 hour charge time

LUMEN 1800LM | RUNTIME 9-390H | BEAM 760M | IP RATING IPX6

NL-350R | RECHARGEABLE NECK LIGHT

- 350 lumen 6500k white SMD LEDs
- Super lightweight, adjustable and comfortable
- 2 Light heads can be adjusted independently
- Super tough nylon & polycarbonate construction
- Up to 120° wider lighting angle
- IK07 Shock proof - 2m drop resistant
- IP54 Dust & water resistant
- Circuit protection prevents battery from over-charging or over-discharging
- High quality 3.7v 700mAh Li-ion battery

BATTERY 3.7v 700mAh Li-ion
WEIGHT 140g
DIMENSIONS 230 x 150 x 23mm

- 3 Colour LED battery level indicator
- Charging indicator - Green flash: Charging / Green: Fully Charged
- Low battery 3x warning flash - reminds when charging is needed
- 1A USB-C charging cable included - quick 2.5 hour charge time

LUMEN 350LM | RUNTIME 2-10H | BEAM 45M | IP RATING IP54/IK07

PB-7800 | POWERBANK WITH FLASHLIGHT

- Industrial magnetic powerbank with flashlight
- High quality 3.7v 7800mAh Li-ion battery
- Super tough nylon and TPR construction
- Intelligent multiple outputs - 5V-2.4A / 9V-2A / 12V-1.5A
- Fast 2A USB-C charging - 5 hour charge time
- Over-charge, over-load, deep-discharge and short-circuit protection
- Battery level and charging indicators
- 250 lumen 6500k SMD LED flashlight with flashing mode

BATTERY 3.7v 7800mAh Li-ion
WEIGHT 265g
DIMENSIONS 114 x 65 x 32mm

- IK07 Shock proof - 2m drop proof
- IP65 Dust & water resistant
- Super strong magnetic base
- Sturdy rear metal pocket clip
- 1m high quality USB-C charging cable included

LUMEN 250LM | RUNTIME 35H | BEAM 21M | IP RATING IP65/IK07



| HIGH CRI LIGHTS



| CRI-1250R



CRI-3350 | HIGH CRI SITE LIGHT

- 3350 lumen 30W high CRI 96+ COB LED
- 5 Colour Temperatures - CCT: 2700k / 3500k / 4500k / 5500k / 6500k
- Dual power - rechargeable & mains powered
- Memory function - remembers last mode used
- Super tough aluminium, nylon & TPR structure
- Built in aluminium heat sink
- 180° adjustable stand/handle with hole for attaching to tripod/magnet
- IK07 shock resistance

BATTERY	11.1v 5200mAh Li-ion
WEIGHT	1150g
DIMENSIONS	224 x 199 x 74mm

- Battery level & charging indicators
- Mains 5M 15V-1.5A 'quick release' multi-country charger/power lead included (inc UK, EU, US & AU adaptors)
- Fast 3.5 hours charge time



LUMEN 3350LM | RUNTIME 2.5-9H | BEAM 62M | IP RATING IP65/IK07



CRI-1250R | HIGH CRI INSPECTION LIGHT

- 1250 lumen 10W high CRI 96+ COB LED
- 3 Colour Temperatures - CCT: 2700k / 4500k / 6500k
- Press and hold smooth dimming function
- 250 Lumen 3W SMD LED flood beam top torch
- 5W UV LEDs on front (385nm)
- Built-in power bank for charging devices
- Super tough aluminium & polycarbonate
- Strong integral magnets on back & base
- Retractable 360° rotating hanging hook
- Glow-in-the-dark strip around LED
- Battery level & charging indicators
- 2A USB-C charging - 5 hr charge time

BATTERY	3.7v 5000mAh Li-ion
WEIGHT	406g
DIMENSIONS	216 x 58 x 38mm

- Magnetic charging dock & 1m USB-C charging cable included



LUMEN 1250LM | RUNTIME 3-24H | BEAM 58M | IP RATING IP65/IK07



CRI-H200R | HIGH CRI SENSOR HEADTORCH

- 200 lumen high CRI 96+ COB LED
- 3 Colour Temperatures - CCT: 2500k / 4500k / 6500k
- Sensor mode for hands-free operation
- Super tough construction with rubberised coating
- 60° Rotational head
- Adjustable non-slip silicone lined headband included
- IP65 dust & water resistant
- IK07 Shock resistant
- Red-to-Green charging indicator

- Fast 1A USB-C charging - 2.5 hr charge time
- 1m USB-C charging cable included

BATTERY	3.7v 1500mAh Li-Polymer
WEIGHT	110g
DIMENSIONS	Headtorch 48 x 79 x 46mm



LUMEN 200LM | RUNTIME 3H | BEAM 27M | IP RATING IP65/IK07



| ATEX LIGHTS



| ATEX-FL4



ATEX-RA2 | INTRINSICALLY SAFE RIGHT ANGLE TORCH

- 350 lumen white CREE LED, 6500k
- Atex zone 0 gas compliant
- Suitable for mining
- Safety release valve to release hydrogen gases
- Chemical and corrosion resistant
- Rubberised head and grips for durability
- Ultra strength polycarbonate housing
- Convenient rear stainless steel pocket clip
- Safety locking battery compartment
- Easy push micro switch operation
- IP54 dust and water resistant

BATTERY 4 x 1.5v AA Alkaline Batteries (not inc.)
WEIGHT 250g (without batteries)
DIMENSIONS 188 x 69 x 63mm



LUMEN 350LM | **RUNTIME** 6.5-13H | **BEAM** 288M | **IP RATING** IP54



ATEX-H2 | INTRINSICALLY SAFE HEADTORCH

- 225 lumen white CREE LED, 6500k
- ATEX zone 0 gas compliant
- Safety release valve to release hydrogen gases
- Strong ABS housing with durable synthetic rubber coating
- Safety locking battery compartment
- Easy press rubberised switch
- 2 Mode light settings
- 90° Rotational head
- Adjustable non-slip silicone lined headband included
- IP67 Dust and waterproof
- 1m Submersible

BATTERY 3 x 1.5v AAA Alkaline Batteries (not inc.)
WEIGHT 130g (without batteries)
DIMENSIONS Headtorch 80 x 50 x 45mm



LUMEN 225LM | **RUNTIME** 5-12H | **BEAM** 115M | **IP RATING** IP67



ATEX-FL4 | INTRINSICALLY SAFE FLASHLIGHT

- 150 lumen white CREE LED, 6500k
- ATEX Zone 0 gas compliant
- Safety release valve to release hydrogen gases
- Chemical and corrosion resistant
- Rubberised head & handle for greater durability
- Industrial strength polycarbonate housing
- Detachable pocket clip included for hands free use
- Safety locking battery compartment
- Polycarbonate lens and smooth reflector for long distance beam
- Optional brackets available for helmets
- IP67 dust and waterproof
- 3m Submersible

BATTERY 4 x 1.5v AA Alkaline Batteries (not inc.)
WEIGHT 115g (without batteries)
DIMENSIONS 174 x 47 x 47mm

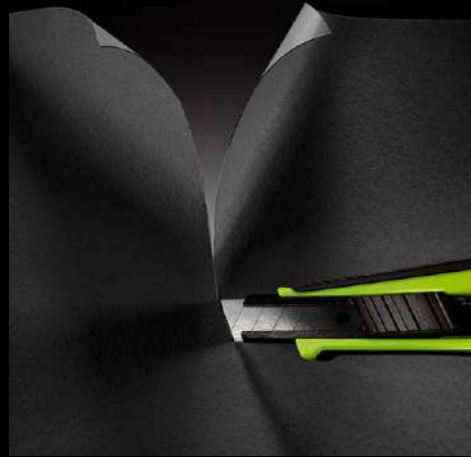


LUMEN 150LM | **RUNTIME** 6-69H | **BEAM** 235M | **IP RATING** IP67

TOOLS



| UG-I2C4
 | UK1
 | MT5M4SL



KC1 | HEAVY DUTY KNIFE CUTTER

- Heavy duty stainless steel, ABS & TPR construction
- 8 x 18mm Snap-off SK2 black steel blade
- Multi-position retractable quick slide button with auto-lock mechanism
- 2 x Replacement snap-off blades conveniently stored inside
- Quick and easy blade change
- Convenient hole for attaching a lanyard

WEIGHT 100g | **DIMENSIONS** Length: 167mm



KC2 | HEAVY DUTY KNIFE CUTTER

- Heavy duty nickel, TPR and ABS construction
- Retractable SK5 black steel blades
- 4 Replacement blades conveniently stored inside
- Multi-position retractable quick slide button
- Sliding locking button mechanism
- Quick release blade change
- Convenient hole for attaching a lanyard
- Accepts most standard utility blades

WEIGHT 183g | **DIMENSIONS** Length: 185mm



UK1 | FOLDING UTILITY KNIFE

- Heavy duty nickel, TPR and ABS construction
- 4 x SK5 black steel blades included
- 3 Replacement blades conveniently stored inside
- Multi-positional folding design
- Easy press unlocking button
- Quick release blade change
- Convenient wire/strap cutter slot
- Useful hole for attaching a lanyard
- Accepts most standard utility blades
- Folded length: 116mm

WEIGHT 125g | **DIMENSIONS** Extended Length: 175mm





FK3 | HEAVY DUTY FOLDING UTILITY KNIFE

- Heavy duty folding utility knife
- High-carbon 3Cr13 stainless steel blade
- 'Clip point' blade with serrated edge and tapered spine swedge
- Blade spine includes thumb rise for extra grip
- Blade hardness 52-54 HRC
- Assisted one-handed opening with thumb studs
- Easy to operate one-handed 'liner lock' mechanism
- Ultra tough ergonomic aluminium handle with front Quillion finger guard
- Pocket clip for easy carrying
- Hole in the handle for adding a lanyard

WEIGHT 119.5g | **DIMENSIONS** Extended Length: 198mm

EK4 | HEAVY DUTY FOLDING UTILITY KNIFE

- Heavy duty folding utility knife
- High-carbon 3Cr13 stainless steel blade
- 'Drop point' blade with serrated edge and tapered spine swedge
- Blade spine includes thumb rise for extra grip and 2 wire stripper notches
- Assisted one-handed opening with thumb studs
- Blade hardness 52-55 HRC
- Ultra tough ergonomic aluminium handle with front Quillion finger guard
- Easy to operate one-handed 'Framelock' mechanism
- Pocket clip for easy carrying

WEIGHT 135g | **DIMENSIONS** Extended Length: 195mm

EK5 | HEAVY DUTY FOLDING UTILITY KNIFE

- Heavy duty folding utility knife
- Super high-carbon 7Cr17MoV stainless steel blade with high tensile strength
- 'Sheepsfoot' blade with cable stripper notch
- High blade hardness 56-58 HRC
- Crescent nail pull in the blade spine for easy opening
- Sharpening 'choil' notch at the blade plunge line for easier sharpening
- Durable and easy to operate 'lockback' mechanism
- Ultra tough ergonomic aluminium handle
- Hole in the handle for adding a lanyard
- Super low-profile at only 10mm thick

WEIGHT 107g | **DIMENSIONS** Extended Length: 182mm





ES-6 | HEAVY DUTY 6" ELECTRICIANS SCISSORS

- Ultra tough 6" professional electricians scissors (160mm)
- Whole steel frame for high resistance & durability
- Industrial strength polypropylene handles with full TPR coating for superior grip & comfort
- High grade 4034 Japanese stainless steel 4.0mm thick polished blades with 40mm cutting edge
- Black 'DLC' (diamond-like-carbon) coating on blades for extra sharpness
- High hardness blades (58±2 HRC) with anti-slip serrated edge
- 2.5mm² & 1.5mm² wire strippers & wire crimping terminal
- Notch in the blades for cutting/stripping 50mm² cable
- Includes heavy duty nylon clip-on belt sheath
- Suitable for cutting aluminium, copper and soft cable

WEIGHT 153g | **DIMENSIONS** Length: 160mm | Blade Length: 40mm



MFS-8 | HEAVY DUTY 8" MULTI-FUNCTION SCISSORS

- Ultra tough 8" professional multi-function scissors (205mm)
- Industrial strength polypropylene handles
- With added TPR moulding for superior grip & comfort
- High grade 420 J2 Japanese stainless steel 3.0mm thick polished blades with 60mm cutting edge
- Black 'DLC' (diamond-like-carbon) coating on blades for extra sharpness
- High hardness blades (53±2 HRC) with anti-slip serrated edge
- Extra functions include safety box cutter, wire cutter notch and jar opener/nut cracker
- Includes polypropylene safety sheath
- Suitable for cutting soft materials such as tin sheets, carpets, corrugated cartons, aluminium sheets, plastics, CD, cards... etc.

WEIGHT 142g | **DIMENSIONS** Length: 205mm | Blade Length: 60mm



UG-12C4 | HEAVY DUTY CUT-D IMPACT GLOVES

- Cut resistant gloves with full dorsal TPR impact protection
- Flexible lightweight design, TPR weighs less than 60g
- Heavy duty 15-Gauge high-performance polyethylene (HPPE) yarn interwoven with steel and glass fibres for added strength and high cut resistance
- Sandy nitrile half-dip coating offers excellent grip
- TPR is sonic welded to the glove for greater longevity
- Adjustable TPR velcro wrist strap for secure fit
- Synthetic leather stitched cuff for durability
- Touch screen technology
- EN 388:2016 mechanical hazard protection: 4X42DP - cut level D
- ANSI/ISEA 138 impact resistant level 2
- ANSI cut resistant level A4
- Available in 5 EU sizes - 7/S, 8/M, 9/L, 10/XL & 11/XXL.



CERTIFICATIONS EN ISO 21420:2020 | EN 388:2016+A1:2018 | ANSI/ISEA 2016 | ANSI/ISEA138:2019



UG-TW1 | THERMAL WATERPROOF GLOVES

- Warm thermal waterproof gloves
- Uses rPET polyester yarn that has been extruded from waste plastic bottles
- Superior quality soft & supple 0.7-0.8mm full grain goat leather
- Reinforced leather top of finger tips for extra durability
- Suitable for use in cold & wet environments due to waterproof HIPORA membrane
- Reflective silver strips for added visibility
- Elasticated 360° wrist for a secure warm fit
- Ergonomically designed for improved dexterity
- Touch screen technology in the thumb & index finger
- EN 388:2016 mechanical hazard protection: 2X32B - cut level B
- EN 511:2006 protection against Cold hazards - 22X
- Available in 5 EU sizes - 7/S, 8/M, 9/L, 10/XL & 11/XXL.



CERTIFICATIONS EN ISO 21420:2020 | EN 388:2016+A1:2018 | EN 511:2006



SG-Y10 | SAFETY GLASSES - INDOOR/OUTDOOR LENSES



- Super tough flexible nylon-polymer frame
- 8-Base curved toughened polycarbonate lenses
- Toughened polycarbonate lenses
- Indoor & outdoor mirror lens coating
- With 99% UV A/B/C protection (EN170)
- Anti-scratch & anti-fog lens coatings
- Flexible PC & TPR co-injected side arms
- Rubberised TPR inner arm grips
- TPR non-slip nose grip with reinforced bridge
- Side TPR temple shields with ventilation
- Micro-fibre drawstring storage bag included

LENS MARKINGS

- Lens Filters: 2 (UV EN170) 1.4 (Indoor & Outdoor)
- Optical Class: 1 (high optical quality)
- Lens Coatings: Standard Anti-Scratch & Anti-Fog
- Mechanical risk - Low energy impact - F
- High speed particles at extreme temperatures - T

WEIGHT 33.5g



CERTIFICATIONS CE/UKCA - EN166 | USA - ANSI Z87.1 | AU/NZ - AS/NZS 1337.1



SG-YCB | SAFETY GLASSES - CLEAR BLUE LIGHT LENSES

- Tough flexible polycarbonate frame
- 8-Base curved toughened polycarbonate lenses
- Clear 420Cut blue light blocking lenses
- Blocks harmful HEV blue light up to 420nm
- K & N anti-scratch & anti-fog lens coatings
- 99% UV A/B/C protection (EN170)
- Flexible PC & TPR co-injected side arms
- Adjustable rubberised non-slip nose pads
- Reinforced nose bridge
- Micro-fibre drawstring storage bag included

LENS MARKINGS

- Lens Filters: 2C (UV EN170) 1.2 (Clear)
- Optical Class: 1 (high optical quality)
- Lens Coatings: Anti-Scratch - K Anti-Fog - N
- Mechanical risk: Low energy impact - F
- High speed particles at extreme temperatures - T

WEIGHT 28.5g



CERTIFICATIONS CE/UKCA - EN166 | USA - ANSI Z87.1 | AU/NZ - AS/NZS 1337.1



SG-YDS | SAFETY GLASSES - DARK SMOKE LENSES

- Tough flexible polycarbonate frame
- 8-Base curved toughened polycarbonate lenses
- Dark smoke lens tinting
- K & N anti-scratch & anti-fog lens coatings
- 99% UV A/B/C protection (EN172)
- Flexible PC & TPR co-injected side arms
- Side temple ventilation
- Adjustable rubberised non-slip nose pads
- Reinforced nose bridge
- Micro-fibre drawstring storage bag included

LENS MARKINGS

- Lens Filters: 5 (UV EN172) 2.5 (Dark Smoke)
- Optical Class: 1 (high optical quality)
- Lens Coatings: Anti-Scratch - K Anti-Fog - N
- Mechanical risk: Low energy impact - F
- High speed particles at extreme temperatures - T

WEIGHT 28g



CERTIFICATIONS CE/UKCA - EN166 | USA - ANSI Z87.1 | AU/NZ - AS/NZS 1337.1



SG-YFG | SAFETY GLASSES - CLEAR LENSES & FOAM GASKET

- Tough flexible polycarbonate frame
- 8-Base curved toughened polycarbonate clear lenses
- Hytrel black back frame with EVA foam gasket
- K & N anti-scratch & anti-fog lens coatings
- 99% UV A/B/C protection (EN170)
- Flexible PC & TPR co-injected side arms
- With side temple ventilation
- Adjustable TPR non-slip nose pads
- Reinforced nose bridge
- Micro-fibre drawstring storage bag included

LENS MARKINGS

- Lens Filters: 2C (UV EN170) 1.2 (Clear)
- Optical Class: 1 (high optical quality)
- Lens Coatings: Anti-Scratch - K Anti-Fog - N
- Mechanical risk: Low energy impact - F
- High speed particles at extreme temperatures - T

WEIGHT 39.5g



CERTIFICATIONS CE/UKCA - EN166 | USA - ANSI Z87.1 | AU/NZ - AS/NZS 1337.1



MTM51 | HEAVY DUTY TAPE MEASURE

- Heavy duty 5m tape measure with 19mm wide blade
- High performance nylon coated blade
- 1.8m/6ft high stand-out blade
- Double riveted carbon steel hook
- Dual colour double sided imperial & metric blade
- Powerful push lock secures the blade
- Superior internal mechanism provides smooth operation
- Durable rear pocket clip - wont detach even if screw loosens
- Impact resistant TPR covered ABS casing
- Drop tested from 1.5m

WEIGHT 179g | **DIMENSIONS** H 69.5 x W 71 x D 41mm



MT5M4SL | HEAVY DUTY TAPE MEASURE

- Heavy duty 5m tape measure with 19mm wide blade
- Automatic self-lock secures the blade, with easy press button to release
- High performance nylon coated blade
- 1.8m/6ft horizontal stand-out blade
- Double riveted carbon steel hook
- Dual colour double sided imperial & metric blade
- Superior internal mechanism provides smooth operation
- Durable rear pocket clip - wont detach even if screw loosens
- Impact resistant TPR covered ABS casing
- Drop tested from 1.5m

WEIGHT 240g | **DIMENSIONS** H 74 x W 81 x D 42mm



MT5M2 | HEAVY DUTY TAPE MEASURE

- Heavy duty 5m tape measure with 27mm wide blade
- Ultra high performance double nylon coated 'SUPERBLADE' gives 5 x extended life
- 2.9m/9.5ft horizontal stand-out blade
- SUPERBLADE withstands durability tests of falling sand particles with 60 litres of salt spray for 100 hours
- Magnetic triple riveted stainless steel dual hook with 1kg suction capacity
- Dual colour double sided imperial & metric blade
- Durable rear pocket clip - wont detach even if screw loosens
- Powerful push lock secures the blade
- Superior internal mechanism provides smooth operation
- Impact resistant TPR covered ABS casing
- Drop tested from 9m

WEIGHT 322g | **DIMENSIONS** H 76.5 x W 79 x D 51.8mm



MT8M3 | SUPER HEAVY DUTY TAPE MEASURE

- Super heavy duty 8m tape measure with 32mm wide blade
- Ultra high performance double nylon coated 'SUPERBLADE' gives 5 x extended life
- 4m/13ft horizontal stand-out blade
- SUPERBLADE withstands durability tests of falling sand particles with 60 litres of salt spray for 100 hours
- Magnetic triple riveted stainless steel dual hook with 1kg suction capacity
- Dual colour double sided imperial & metric blade
- Durable rear pocket clip - wont detach even if screw loosens
- Powerful push lock secures the blade
- Superior internal mechanism provides smooth operation
- Impact resistant TPR covered ABS casing
- Drop tested 12 times from 3m

WEIGHT 603g | **DIMENSIONS** H 90 x W 90 x D 59mm



MT827-C1 | CLASS 1 HEAVY DUTY TAPE MEASURE

- Heavy duty 8m tape measure with 27mm wide blade
- Class 1 high precision calibrated blade
- 2.85m/9.35ft high stand-out blade
- Triple riveted black carbon steel dual hook
- Dual colour double sided imperial & metric blade
- Durable rear pocket clip - wont detach even if screw loosens
- Powerful push lock secures the blade with convenient finger stop on bottom
- Superior internal mechanism provides smooth operation
- Impact resistant TPR covered ABS casing
- Drop tested from 3m

WEIGHT 509g | **DIMENSIONS** H 85 x W 83 x D 51.3mm



LTS1013 | HEAVY DUTY 10M LONG TAPE

- Heavy duty 10m / 33ft long steel tape measure
- High performance nylon coated 13mm wide blade
- White double sided blade with imperial & metric measurements
- Easy finger pull ring with fold-out steel ground spike
- Superior internal mechanism provides smooth operation
- 3:1 Geared ratio for fast rewind
- Fold-out rotating crank handle on back
- Impact resistant TPU covered ABS casing
- Drop tested from 1m

WEIGHT 322g | **DIMENSIONS** H 116.5 x W 107 x D 42.3mm





LTF3015 | HEAVY DUTY 30M LONG TAPE

- Heavy duty 30m / 100ft long fibre-glass tape measure
- Protective housing and easy carry handle
- High performance double PVC coated 15mm wide blade
- White double sided blade with imperial & metric measurements
- Easy finger pull ring with fold-out steel ground spike
- Superior internal mechanism provides smooth operation
- 3:1 Geared ratio for fast rewind
- Fold-out rotating crank handle on the back
- Impact resistant TPR covered ABS casing
- Drop tested from 1m

WEIGHT 686g | **DIMENSIONS** H 256.5 x W 159.5 x D 54mm



LTF5015H | HEAVY DUTY 50M LONG TAPE

- Heavy duty 50m / 165ft long fibre-glass tape
- High performance double PVC coated 15mm wide blade
- White double sided blade with imperial & metric measurements
- Easy finger pull ring with fold-out steel ground spike
- 3:1 Geared ratio for fast rewind
- Fold-out rotating crank handle on the back
- Large protective housing with easy hold ergonomic handle on the front
- Impact resistant TPU covered ABS casing
- Drop tested from 1m

WEIGHT 909g | **DIMENSIONS** H 203.1 x W 209.8 x D 85mm



CL30MB | 30M CHALK LINE

- 30m / 100ft compact & lightweight chalkline
- 6:1 Geared ratio for super fast rewind
- Fold-out rotating crank handle on the back
- Twisted 1mm polyester cord with 20kg break resistance
- Black carbon steel end hook with finger pull hole
- Easy open large sliding door for re-filling chalk with 100g powder capacity
- Impact resistant TPR covered ABS casing
- Drop tested from 1m
- Comes with 120g bottle of blue chalk and a line spirit level

WEIGHT 164g | **DIMENSIONS** H 59 x W 133 x D 88mm





OP-1B | HEAVY DUTY STORAGE POUCHES

- Super heavy duty set of 2 storage zip pouches
- Made from 600D ultra tough PVC impregnated nylon
- Thick waterproof lining on the inside
- Large mesh windows on the front
- Heavy duty Unilite branded #8 YKK zippers
- Stylish black reflective strips for added safety
- With extra silver reflective details
- Additional Velcro flap pockets on the back
- External Unilite branding snap-hook carabiners

DIMENSIONS Small: H 150 x W 230mm | Large: H 180 x W 200mm



OP-2B | HEAVY DUTY STAND-UP STORAGE POUCHES

- Super heavy duty set of 2 storage zip pouches
- Made from 600D ultra tough PVC impregnated nylon
- Thick waterproof lining on the inside
- Large mesh windows on the back
- Heavy duty Unilite branded #8 YKK zippers
- Stylish black reflective strips for added safety
- With extra silver reflective branding details
- External Unilite branded snap-hook carabiners
- Reinforced 60mm base depth allows pouches to stand-up

DIMENSIONS Small: H 150 x W 210mm | Large: H 200 x W 250mm



OP-3B | SUPER HEAVY DUTY STORAGE POUCH

- Super heavy duty storage zip pouch
- Made from 900D ultra tough PVC impregnated nylon
- Large main internal compartment with extra thick padded waterproof lining
- Extra heavy duty Unilite branded #10 YKK zippers
- Super heavy duty waterproof exterior layer around the base & sides
- Large mesh expanding window pocket on the front
- Stylish black reflective strips for added safety
- With extra silver reflective branding details
- Mixture of 5 additional Velcro flap & Zip pockets using #8 YKK zippers
- 2 xternal 'D' rings attached using marine grade stainless steel rivets
- Comes with a 12Kn carabiner and A6 waterproof stone paper notebook

DIMENSIONS H 270 x W 190 x D 110mm

| ACCESSORIES



| LARGE MAGNET



LARGE MAGNET | SUPER STRONG MAGNET

- Ultra strong heavy duty magnet
- Made from steel and aluminium
- Locking wing nut securely holds a site light
- Can be used with the following Unilite site lights: CRI-2300, CRI-3350, SLR-4400, SLR-6000, RF-2000, RF-3300, RF-5400, MTB-5000, MTB-5300 & MTB-10000

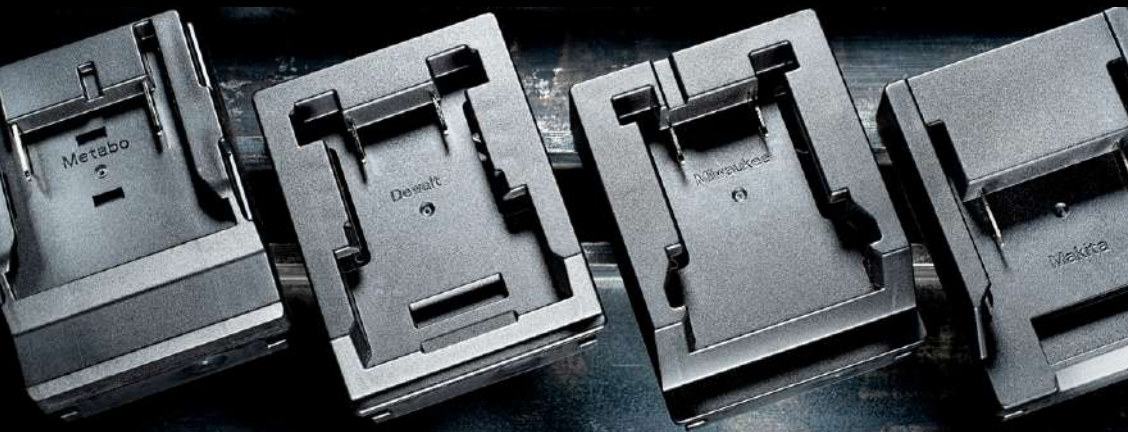
WEIGHT 169g | **DIMENSIONS** H 37 x Ø 54mm



TRIPOD-360 | MULTI-USE TRIPOD WITH MAGNETIC PLATE

- Can hold up to 4 work lights
- Extendable height range between 0.9-1.9m
- Work lights with magnets can be placed on top or underneath the top plate
- Toughened aircraft grade aluminium construction
- ABS stability feet to prevent slipping
- One tripod leg has an extra extending feature for uneven ground
- Quick assembly and dismantling using the central screw tightening height adjuster
- Can be used with the following unilite magnetic site lights: SLR-3500 & SLR-5500
- Can be used with the following site lights when used with the LARGE-MAGNET attachment: CRI-2300, CRI-3350, SLR-4400, SLR-6000, RF-2000, RF-3300, RF-5400, MTB-5000, MTB-5300 & MTB-10000

WEIGHT 4800g | **DIMENSIONS** 1460 x 1460 x 1930mm



MTB-ADAPTORS | MTB BATTERY ADAPTORS

- MTB-5000, MTB-5300 & MTB-10000 Site lights come with Milwaukee, Metabo, DeWalt and Makita adaptors - They only accept a maximum of 20V 6Ah batteries (Please Note: DeWalt Powerstack batteries are not compatible)
- Bosch, Hilti, Flex, Festool, Husqvarna adapters available to purchase separately

NOTE: Hilti Nuron 22V, Metabo HPT and Flex 24V battery platforms are not compatible

WEIGHT 79-96g | **DIMENSIONS** Varies for each brand

| CLOTHING



| LWJ



ZFJ | ZIPPED FLEECE LINED JUMPER

- 260gsm thick 100% polyester black zipped jumper for warmth and protection
- Brushed fleece lining for warmth in the harshest conditions
- Reflective silver details for enhanced visibility and safety
- Unilite branded YKK 'reversed' zippers
- Windbreaker flap behind main zip, providing extra layer against chilling gusts
- Elasticated cuffs to keep out sleeve drafts
- Additional soft lining around collar for added comfort
- Combines a practical working jacket with style
- Suitable for both work and leisure



SIZES AVAILABLE Small | Medium | Large | XL | 2XL | 3XL



LWJ | LIGHTWEIGHT PADDED JACKET

- Warm padded lightweight design
- 60gsm 100% nylon shell for superior water resistance
- 100% Polyester padding provides extra layer of insulation for added warmth
- Warm brushed fleece lining for added comfort
- Soft fleece lining around collar
- Unilite branded YKK 'reversed' zippers
- Elasticated cuffs to keep out sleeve drafts
- Windbreaker flap behind main zip, providing extra layer against chilling gusts
- Hi-vis yellow colouring and reflective silver piping for added safety
- Combines a practical working jacket with style
- Suitable for both work and leisure

SIZES AVAILABLE Small | Medium | Large | XL | 2XL | 3XL



WPC | WIND & WATERPROOF COAT

- Triple layered water and windproof coat
- Engineered to keep you dry and shielded from the elements
- Outer shell constructed from 94% polyester and 6% spandex for durability and flexibility
- Internal layers made of 100% polyester bonded material with additional seam tape for enhanced wind and water resistance
- Peaked hood with elastic pull cords and high-rise collar for a secure seal against wind and rain
- Hood can be easily removed with detachable pop studs
- Unilite branded YKK 'reversed' zippers
- Windbreaker flap behind main zip, providing extra layer against chilling gusts
- Reflective silver details for enhanced visibility and safety
- Underarm zips for extra ventilation on hot days
- Combines a practical working jacket with style
- Suitable for both work and leisure

SIZES AVAILABLE Small | Medium | Large | XL | 2XL | 3XL




GILET | WARM PADDED GILET


- 100% heavy duty thick polyester shell
- Soft thick padding for superior warmth
- Hi-vis yellow and reflective chest and back strips for added safety
- Fleece lining on the neck for extra comfort
- Hard wearing YKK zippers with convenient pull tags
- Windbreaker flap behind main zip, providing extra layer against chilling gusts
- Soft inner lining for comfort
- Comes in a handy zip pouch for protection
- Suitable for both work and leisure


SIZES AVAILABLE Small | Medium | Large | XL | 2XL | 3XL





 **BUILT
TOUGH**


 uniliteuk

 uniliteuk

 uniliteuk

 uniliteuk

 uniliteuk

 unilite

Unilite Limited

The LAB, Moons Moat Drive
Redditch, Worcestershire
B98 9FG - UK

T: 00[44] 1527 584 344

E: sales@unilite.co.uk

W: www.unilite.co.uk