



UNILITE_®





BUILT TOUGH

Since 1981 our family run business has had a passion for creating high quality tools that professionals can rely on. Made from premium materials and with ultra-tough designs, we choose only the best quality components to make our products. We don't compromise on quality.

As we design our products in house, we can ensure that even the tiniest details are covered. Whether it is choosing the lightest weight materials, or ensuring our models are robust enough for the trades, our products are designed to your high standards.

Moving forward, our ethos is to always improve our product offering. Whether that is upgrading existing models, or designing completely new products, we won't stop, nor will we compromise on quality or design.

In recent years we have embraced the latest technology such as denser energy lithium batteries, improved COB LEDs, wireless charging, and a change to over 90% recyclable packaging. We refuse to stop here. We are already using recycled materials in some of our products as well as packaging, and later in 2023 we will start introducing a new range of portable lighting that can run off power tool batteries which reduces battery wastage and in turn has less impact on the environment. Every year we will continue improving and create the best products that our customers deserve.

CONTENTS

SITE LIGHTS

RF-2000	Heavy Duty Floodlight	5
RF-3300	Heavy Duty Floodlight	5
RF-5400	Super Tough Floodlight	5
SLR-3500	Rechargeable Site Light	7
SLR-5500	Rechargeable Site Light	7
RL-5250	Industrial 360° LED Lantern	7
SLR-4400	Dual Power Site Light	9
MTB-5300	Multi Battery Hybrid Site Light	9

INSPECTION LIGHTS

PL-3	Inspection Penlight	11
IL-625R	Inspection Light	11
IL-SIG1	Signalling Inspection Light	11
IL-175R	Folding Inspection Light	13
IL-375R	Folding Inspection Light	13
IL-825R	Folding Inspection Light	13

WORK LIGHTS

SLR-1450	Compact Rotating Work Light	15
SLR-1750	Work Light with Powerbank	15

HIGH CRI LIGHTS

CRI-1650R	High CRI Compact Work Light	15
CRI-1250R	High CRI Inspection Light	17
CRI-3350	High CRI Site Light	17
CRI-H200R	High CRI Sensor Headtorch	17
HT-680R	Dual LED High CRI Headtorch	19

HEADTORCHES

HT-900R	High Power Industrial Headtorch	19
HL-11R	Industrial Super Bright Headtorch	19
PS-HDL9R	High Power Industrial Headtorch	21
HT-650R	Dual Power Dual LED Headtorch	21
HL-8R	Dual Beam Sensor Headtorch	21
HT-450	Dual LED Headtorch	23
PS-HDL6R	Dual Power Helmet Headtorch	23
HL-5R	Sensor Headtorch	23
HL-4R	USB Helmet Headtorch	25
PS-HDL2	Helmet Headtorch	25

MISC. LIGHTS

BLT-1	USB Beanie Light	25
NL-350R	Rechargeable Neck Light	27
PB-7800	Powerbank with Flashlight	27
L-1800	Dual LED Lantern	27

FLASHLIGHTS

PT-2	Aluminium Penlight	29
FL-550R	Aluminium USB Flashlight	29
FL-1300R	Aluminium USB Flashlight	29

WIRELESS CHARGING

WCFL12	Wireless Flashlight	31
WCIL11	Wireless Inspection Light	31
WCHX7	Wireless Compact Work Light	31
WCHT5	Wireless Dual LED Headtorch	33
WCSGL	Single Wireless Charging Pad	33
WCDBL	Double Wireless Charging Pad	33

INTRINSICALLY SAFE TORCHES

ATEX-RA2	Zone 0 Right Angle Torch	35
ATEX-FL4	Zone 0 Flashlight	35
ATEX-H2	Zone 0 Headtorch	35

TOOL POUCHES

OP-1B	Heavy Duty Storage Pouches	37
OP-2B	Heavy Duty Storage Pouches	37
OP-3B	Super Heavy Duty Storage Pouch	37

KNIVES & SCISSORS

KC1	Heavy Duty Cutter	39
KC2	Heavy Duty Cutter	39
UK1	Folding Utility Knife	39
FK3	Heavy Duty Folding Utility Knife	41
EK4	Heavy Duty Folding Utility Knife	41
EK5	Heavy Duty Folding Utility Knife	41
ES-6	Heavy Duty 6" Electricians Scissors	43
MFS-8	Heavy Duty 8" Multi-Function Scissors	43

TAPE MEASURES

MT5M4SL	Heavy Duty 5m Tape Measure	45
MT5M2	Heavy Duty 5m Tape Measure	45
MT8M3	Heavy Duty 8m Tape Measure	45

SAFETY GLASSES

SG-YDS	Safety Glasses - Dark Smoke	47
SG-YCB	Safety Glasses - Blue Light	47
SG-YFG	Safety Glasses - Foam Gasket	47
SG-YID	Safety Glasses - Indoor/Outdoor	49
GLASSES-KIT	Safety Glasses Accessories Kit	49

SAFETY GLOVES

UG-12C4	Impact & Cut-D Gloves	51
UG-TW1	Thermal Waterproof Gloves	51

MAGNET & TRIPODS

LARGE-MAGNET	Super Strong Magnet	53
TRIP00-MINI	Heavy Duty Mini Tripod	53
TRIP00-SGL	Single Head Tripod	53
TRIP00-SW	Single Head Tripod with Wheels	53
TRIP00-360	Tripod with Magnetic Plate	53

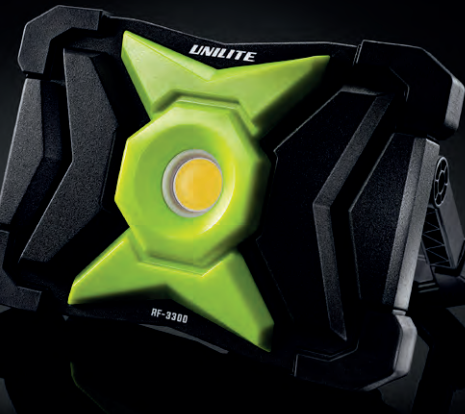


RF-2000 | HEAVY DUTY FLOODLIGHT

- 2000 lumen 15W 6500k COB LED
- Tough heavy duty Aluminium, TPR & nylon construction
- Low profile design for easy storage & transport
- Intelligent heat dissipating design
- 180° Adjustable stand with 2 sizes holes for attaching to tripods and the Unilite magnet
- 2A USB powerbank for charging devices
- Memory function - remembers last mode used
- IP65 dust & water resistant
- IK07 shock proof & 2m drop resistant
- Powerful 3.7v 5200mAh Li-ion battery
- 5 Battery level & charging indicators, plus low battery warning 3x flash
- Fast 2A USB-C charging - 3.5 hour charge time
- 1m high quality USB-C charging cable (included)

BATTERY 3.7v 5200mAh Li-ion
WEIGHT 610g
DIMENSIONS 172.5 x 112 x 49mm

LUMEN 2000LM | **RUNTIME** 3-25H | **BEAM** 56M | **IP RATING** IP65/IK07



RF-3300 | HEAVY DUTY FLOODLIGHT

- 3300 lumen 30W 6500k COB LED
- Tough heavy duty Aluminium, TPR & nylon construction
- Low profile design for easy storage & transport
- Intelligent heat dissipating design
- 180° Adjustable stand with 2 sizes holes for attaching to tripods and the Unilite magnet
- 2A USB powerbank for charging devices
- Memory function - remembers last mode used
- IP65 Dust & water resistant
- IK07 Shock proof & 2m drop resistant
- Powerful 7.4v 5200mAh Li-ion battery
- 5 Battery level & charging indicators, plus low battery warning 3x flash
- Fast 2A USB-C charging - 5.5 hour charge time
- 1m high quality USB-C charging cable (included)

BATTERY 7.4v 5200mAh Li-ion
WEIGHT 940g
DIMENSIONS 208 x 140 x 56mm

LUMEN 3300LM | **RUNTIME** 3-25H | **BEAM** 79M | **IP RATING** IP65/IK07



RF-5400 | SUPER TOUGH FLOODLIGHT

- 5400 lumen 50W 6500K SMD LEDs
- Top quality LEDs with up to 100,000 hour lifespan
- Dual Power - rechargeable and mains powered
- Super tough heavy duty nylon construction
- Low profile design for easy storage & transport
- Glare-free milky lens for extensive light spread
- Intelligent heat dissipating design
- 180° adjustable stand/handle with holes for tripod/magnet (comes with long threaded screw)
- Memory function - remembers last mode used
- IP65 dust & water resistant
- IK09 shock proof & 2m drop resistant
- 5 x Battery level and charging indicators
- Mains 15V-1.5A multi-country charger/power lead included (inc UK, EU, US & AU adaptors)
- Quick 3.5 hour charge time
- Magnet attachment and tripods available to purchase separately

BATTERY 11.1v 5200mAh Li-ion
WEIGHT 1450g
DIMENSIONS 273 x 205 x 81mm

LUMEN 5400LM | **RUNTIME** 2-16H | **BEAM** 56M | **IP RATING** IP65/IK09



SLR-3500 | RECHARGEABLE SITE LIGHT

- 3500 lumen 30W white SMD LEDs, 6500k
- Powerful 7.4v 6600mAh Li-ion battery
- Removable battery with powerful 2A USB power bank with battery level and charging indicators
- Dual Power - rechargeable battery and mains powered
- Tough aluminium & polycarbonate construction
- Glow-in-the-Dark strip around reflector for extra visibility
- Built-in aluminium heat sink
- Anti-slip rubber grip handle
- Adjustable head to change light angle
- Acrylic LED diffuser for even light dispersion
- Super strong magnetic base
- Mains multi-country 12V-2A charger/power lead included (inc UK, EU, US & AU adaptors)
- 4-5 hours charge time

BATTERY 7.4v 6600mAh Li-ion Battery Pack
WEIGHT 1880g
DIMENSIONS 215 x 192 x 285mm

LUMEN 3500LM | **RUNTIME** 3-6H | **BEAM** 31M | **IP RATING** IP54



SLR-5500 | RECHARGEABLE SITE LIGHT

- 5500 lumen 50W white SMD LEDs, 6500k
- High power 7.4v 7500mAh Li-ion battery
- Removable battery with powerful 2A USB power bank with battery level and charging indicators
- Dual Power - rechargeable battery and mains powered
- Tough aluminium & polycarbonate construction
- Glow-in-the-Dark strip around reflector for extra visibility
- Built-in aluminium heat sink
- Anti-slip rubber grip handle
- Adjustable head to change light angle
- Acrylic LED diffuser for even light dispersion
- Super strong magnetic base
- Mains multi-country 12V-2A charger/power lead included (inc UK, EU, US & AU adaptors)
- 4-5 hours charge time

BATTERY 7.4v 7500mAh Li-ion Battery Pack
WEIGHT 2200g
DIMENSIONS 215 x 192 x 285mm

LUMEN 5500LM | **RUNTIME** 3-6H | **BEAM** 54M | **IP RATING** IP54



RL-5250 | INDUSTRIAL 360° LED LANTERN

- 5250 lumen 50W 160 x SMD LEDs, 6500k
- Dual Power - rechargeable and mains powered
- 360° and 180° Lighting modes
- Ultra tough nylon polymer construction
- Memory function - remembers last mode used
- Milky polycarbonate diffuser for even light dispersion
- Stainless steel carry handle on the top
- Concealed ultra tough hanging hook in the base
- Screw hole in the base for attaching to tripods
- IP65 dust & water proof
- IK07 shock resistant
- High power 11.1v 5200mAh Li-ion battery
- Battery level and charging indicators
- Mains 15V-1.5A multi-country charger/power lead included (inc UK, EU, US & AU adaptors)
- Fast 3.5 hours charge time

BATTERY 11.1v 5200mAh Li-ion
WEIGHT 1820g
DIMENSIONS Ø157.5 x 285.6 mm

LUMEN 5250LM | **RUNTIME** 2-16H | **BEAM** 44M | **IP RATING** IP65/IK07



SLR-4400 | DUAL POWER SITE LIGHT

- 4400 lumen 50W white COB LED, 6500k
- Dual Power - rechargeable & mains powered
- Super tough IK07 aluminium & TPR construction
- Memory function - remembers last mode used
- Built-in aluminium heat sink
- 180° Vertical adjustable stand/handle
- Tripod & magnet mountable via hole in stand
- IP65 dust & water resistant
- Powerful 11.1v 5200mAh integrated Li-ion battery
- Battery level and charging indicators
- Mains 15V-1.5A multi-country charger/power lead included (inc UK, EU, US & AU adaptors)
- Quick 4 hour charge time
- Magnet attachment and tripods available to purchase separately

BATTERY	11.1v 5200mAh Li-ion
WEIGHT	1150g
DIMENSIONS	225 x 220 x 70mm

LUMEN 4400LM | **RUNTIME** 2-9H | **BEAM** 74M | **IP RATING** IP65/IK07



MTB-5300 | MULTI BATTERY HYBRID SITE LIGHT

- 5300 lumen 50W 6500K COB LED
- Dual Power - rechargeable & mains powered
- Takes up to 20V 6.0Ah batteries from Milwaukee, De Walt, Makita & Metabo - 4 adapters included
- Secure battery compartment cover (note: larger 6.0Ah batteries may need to be used without cover)
- Super tough heavy duty nylon construction
- Easy carry rubber grip handle
- 180° Rotating stand with holes for attaching tripod/magnet
- 4 x dim settings: 650 / 1350 / 2700 / 5300 lumen
- IP65 Dust & water resistant / IK07 Shock proof
- Memory Switch - remember last mode used
- Automatic switch-over from mains to battery in the event of power failure (battery installation required) for added safety
- 2A USB Powerbank - works with any battery Installed
- 4 x Battery level & charging indicators
- Comes with 5 metre heavy duty 24V-2.7A HO5RN-F power lead/charger (includes UK, EU, US & AU plugs)
- Unilite 14.8V 5.2Ah battery available to purchase separately (NOTE: Only Unilite battery can be charged via the lamp)

BATTERY	Not included, bare tool
WEIGHT	1250g
DIMENSIONS	W 238 x H 257 x D 181mm

IMPORTANT:- When changing a battery, NEVER lay the lamp face down on the lens, rotate the light over 180-degrees on its stand so it is facing upside down, and change the battery from that angle.

NOTE: runtimes are based on using the Unilite 14.8V 5.2Ah battery. Runtimes with other batteries will vary.

LUMEN 5300LM | **RUNTIME** approx 2.5-16H | **BEAM** 95M | **IP RATING** IP65/IK07





PL-3 | INSPECTION PENLIGHT

- 275 lumen white SMD LEDs, 6500k
- Die cast aircraft grade aluminium construction
- Easy press rubberised micro-switch
- 3 Light mode settings
- Strong magnetic base
- Useful rear aluminium pocket clip
- IPX4 water resistant
- 1m drop resistant

BATTERY 3 x 1.5v AAA Alkaline Batteries (inc.)
WEIGHT 57g (without batteries)
DIMENSIONS 154 x 15 x 21.5mm

LUMEN 275LM | **RUNTIME** 3-16H | **BEAM** 23M | **IP RATING** IPX4



IL-625R | INSPECTION LIGHT

- 625 lumen white 5W COB LED, 6500k
- 250 lumen white 3W SMD LED spot beam torch, 6500k
- 395nm UV LED on front
- Super tough aluminium & polycarbonate
- Rear magnetic pocket clip
- Strong integral magnets on back & base
- Glow-in-the-dark strip around LED
- Battery level & charging indicators
- High power 3.7v 2500mAh Li-ion battery
- Quick 1A USB-C charging - 3 hours charge time
- 1m USB-C charging cable included

BATTERY 3.7v 2500mAh Li-ion
WEIGHT 190g
DIMENSIONS 188 x 35 x 35mm

LUMEN 625LM | **RUNTIME** 3-12H | **BEAM** 46M | **IP RATING** IP65/IK07



IL-SIG1 | SIGNALLING INSPECTION LIGHT

- 1100 lumen white 10W SMD LEDs, 6500k
- Red / Amber / Green SMD LEDs for signalling
- Coloured LEDs have static and 2Hz flashing functions
- 4 Independent switches for easy operation
- Additional 220 lumen white 6500k SMD LED top torch
- Super tough aluminium & polycarbonate construction
- Built-in aluminium heat sink on the back
- Integral rotating hanging hook with magnets
- Multi-positional fold-out kick stand/hook
- IP54 dust and water resistant
- Red-to-Green charging indicator LED
- 1m high quality DC-USB charging cable included

BATTERY 3.7v 4400mAh Li-ion
WEIGHT 334g
DIMENSIONS 205 x 60 x 42mm

LUMEN 1100LM | **RUNTIME** 3.5-30H | **BEAM** 61M | **IP RATING** IP54



IL-175R | FOLDING INSPECTION LIGHT

- 175 lumen white COB LED, 6500k
- Secondary rear 150 lumen white COB LED, 6500k
- Extra top torch - 70 lumen SMD LED, 6500k
- Ultra lightweight compact pocket size
- Memory function - remembers last mode used
- 180° vertical folding head
- Super tough IK07 nylon polymer and aluminium construction
- Useful pocket clip
- Strong magnetic base and dual rear magnets
- High quality 350mAh li-ion battery
- Low battery 3x warning flash - reminds when charging is needed
- Quick 1A USB-C charging - 2.5 hours charge time
- 1m high quality USB-C cable included

BATTERY 3.7v 350mAh Li-ion
WEIGHT 60g
DIMENSIONS folded 111.5 x 19.2 mm / extended 225 x 19.2 mm

LUMEN 175LM | **RUNTIME** 3-6H | **BEAM** 21M | **IP RATING** IP20/IK07



IL-375R | FOLDING INSPECTION LIGHT

- 375 lumen white COB LED, 6500k
- Secondary rear 250 lumen white COB LED, 6500k
- Extra top torch - 100 lumen SMD LED, 6500k
- Ultra lightweight compact pocket size
- Memory function - remembers last mode used
- 180° vertical folding head
- Super tough IK07 nylon polymer and aluminium construction
- Useful pocket clip
- Strong magnetic base and dual rear magnets
- High quality 1100mAh li-ion battery
- Low battery 3x warning flash - reminds when charging is needed
- Quick 1A USB-C charging - 3 hour charge time
- 1m high quality USB-C cable included

BATTERY 3.7v 1100mAh Li-ion
WEIGHT 80.8g
DIMENSIONS folded 156 x 33 x 20.6 mm / extended 298 x 26 x 20.6 mm

LUMEN 375LM | **RUNTIME** 3-6H | **BEAM** 26M | **IP RATING** IP54/IK07



IL-925R | FOLDING INSPECTION LIGHT

- 925 lumen white COB LED, 6500k
- Secondary rear 475 lumen white COB LED, 6500k
- Extra top torch - 150 lumen SMD LED, 6500k
- Compact hand-held and pocket size
- Memory function - remembers last mode used
- 180° vertical folding head
- Super tough aluminium & nylon construction
- IK07 shock resistant - 2m drop resistant
- Super strong magnetic base
- IP54 dust & water resistant
- High quality 2600mAh li-ion battery
- Battery level & charging indicators
- 1A USB-C charging - 4 hour charge time
- 1m high quality USB-C cable included

BATTERY 3.7v 2600mAh Li-ion
WEIGHT 193g
DIMENSIONS folded 162 x 40 x 29 mm / extended 304 x 33 x 29 mm

LUMEN 925LM | **RUNTIME** 2.5-9H | **BEAM** 41M | **IP RATING** IP54/IK07



SLR-1450 | COMPACT WORK LIGHT

- 1450 lumen white COB LED, 6500k
- With 150 lumen 6500k white LED flashlight
- Plus 45 lumen Red and Red flash modes
- Powerful 'LG' 3.7v 5000mAh 21700 Li-ion battery
- Super tough copolymer and aluminium construction
- 180° rotating handle/stand with carabiner snap hook
- Strong magnets within the stand
- Glow-in-the-dark strip for extra visibility
- Battery level and charging indicators
- Faster 2A USB-C charging - 3 hour charge time
- 1m high quality USB-C cable included
- Battery can be removed so a convenient spare can be kept at hand
- 21700 battery has its own USB-C port so is easily charged out of the lamp and used as a separate powerbank

BATTERY 3.7v 5000mAh 21700 Li-ion
WEIGHT 288g
DIMENSIONS folded 122.5 x 50.5 x 50.5mm / extended 219 x 50.5 x 50mm

LUMEN 1450LM | **RUNTIME** 3-90H | **BEAM** 53M | **IP RATING** IPX5



SLR-1750 | WORK LIGHT WITH POWERBANK

- 1750 lumen white COB LED, 6500k
- Red LED modes for emergency / signalling / night vision
- Built-in USB power bank with multiple intelligent outputs - 5V-3A/9V-2A/12V-1A
- Super tough copolymer and aluminium construction
- 180° rotating handle/stand with carabiner snap hook
- Strong magnets within the stand
- Glow-in-the-dark strip for extra visibility
- Super high power 'LG' 10,400mAh battery
- Battery level and charging indicators
- Faster 4 - 4.5 hour USB-C charging with multiple inputs - 5V-3A/9V-2A
- 1m high quality USB-C cable included

BATTERY 3.7v 10,400mAh Li-ion
WEIGHT 600g
DIMENSIONS folded - 158 x 102 x 55mm / extended - 268 x 102 x 48mm

LUMEN 1750LM | **RUNTIME** 4.5-195H | **BEAM** 50M | **IP RATING** IPX5



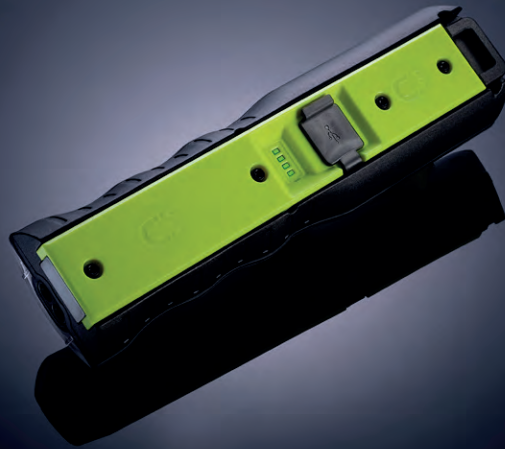
CRI-1650R | HIGH CRI COMPACT WORK LIGHT

- 1650 lumen 13.8W high CRI 96+ COB LED
- 4 Colour Temperatures - CCT range: 2700k / 3500k / 4500k / 6500k
- 4 x 395nm UV LEDs on the front
- Super tough nylon, TPR and aluminium construction
- Built-in USB power bank with multiple intelligent outputs - 5V-3A/9V-2A/12V-1A
- Glow-in-the-Dark strip around LED for extra visibility
- Easy press rear switches for easy mode selection
- 180° Rotating stand with carabiner snap hook
- Threaded hole and strong magnets in the base
- Super high power 13,500mAh li-ion battery
- Intelligent multiple USB-C charging inputs: 5V-3A / 9V-2A
- Battery level and charging indicators
- Faster 2A and 3A charging - 6 or 5.5 hour charge time
- 1m USB-C charging cable included

BATTERY 3.7v 13,500mAh Li-ion
WEIGHT 420g
DIMENSIONS 98 x 111 x 44.5mm

LUMEN 1650LM | **RUNTIME** 7.5-149H | **BEAM** 39M | **IP RATING** IPX5





CRI-1250R | HIGH CRI INSPECTION LIGHT

- 1250 lumen 10W high CRI 96+ COB LED
- 3 Colour Temperatures - CCT range: 2700k / 4500k / 6500k
- Press and hold smooth dimming function
- 250 Lumen 3W SMD LED flood beam top torch
- 5W UV LEDs on front (385nm)
- Built-in power bank for charging devices
- Super tough aluminium & polycarbonate structure
- Strong integral magnets on back & base
- Retractable 360° rotating hanging hook
- Glow-in-the-dark strip around LED
- Battery level & charging indicators
- Faster 2A USB-C charging - 5 hours charge time
- Magnetic charging dock & 1m USB-C charging cable included

BATTERY 3.7v 5000mAh Li-ion
WEIGHT 406g
DIMENSIONS 216 x 58 x 38mm



LUMEN 1250LM | **RUNTIME** 3-24H | **BEAM** 58M | **IP RATING** IP65/IK07

CRI-3350 | HIGH CRI SITE LIGHT

- 3350 lumen 30W high CRI 96+ COB LED
- 5 Colour Temperatures - CCT range: 2700K / 3500K / 4500K / 5500K / 6500K
- Dual power - rechargeable & mains powered
- Memory function - remembers last mode used
- Super tough aluminium, nylon & TPR structure
- Built in aluminium heat sink
- 180° adjustable stand/handle with hole for attaching to tripod/magnet
- IP65 dust & water resistance
- IK07 shock resistance
- Battery level & charging indicators
- Mains 5M 15V-1.5A 'quick release' multi-country charger/power lead included (inc UK, EU, US & AU adaptors)
- Fast 3.5 hours charge time

BATTERY 11.1v 5200mAh Li-ion
WEIGHT 1150g
DIMENSIONS 224 x 199 x 74mm



LUMEN 3350LM | **RUNTIME** 2.5-9H | **BEAM** 62M | **IP RATING** IP65/IK07

CRI-H200R | HIGH CRI SENSOR HEADTORCH

- 200 lumen high CRI 96+ COB LED
- 3 Colour Temperatures - CCT range: 2500K / 4500K / 6500K
- Sensor mode for hands-free operation
- Super tough construction with rubberised coating
- 60° rotational head
- Adjustable non-slip silicone lined headband included
- IP65 dust & water resistant
- IK07 Shock resistant
- Red-to-Green charging indicator
- Fast 1A USB-C charging - 2.5 hours charge time
- 1m USB-C charging cable included

BATTERY 3.7v 1500mAh Li-Polymer
WEIGHT 110g
DIMENSIONS headtorch 48 x 79 x 46mm



LUMEN 200LM | **RUNTIME** 3H | **BEAM** 27M | **IP RATING** IP65/IK07



HT-680R | DUAL LED HIGH CRI HEADTORCH

- 680 lumen white spot beam CREE LED, 6500k
- Secondary 500 Lumen warm white flood beam high CRI 90+ CREE LED, 4500k
- Memory function - remembers last mode used
- Super tough construction with top quality cables and rubberised coating
- Adjustable non-slip silicone lined headband included
- 4 x Helmet clips included
- 90° rotational head
- IP65 dust & water resistant
- IK07 shock proof - 2m drop resistant
- Rechargeable 3.7v 2600mAh Li-ion battery
- Useful battery level and charging indicator
- 1A USB-C charging - 4.5 hours charge time
- 1m USB-C charging cable included

BATTERY 3.7v 2600mAh Li-Ion Battery
WEIGHT 175g
DIMENSIONS headtorch 56 x 35 x 25mm / battery pack: 86 x 36 x 37 mm



LUMEN 680LM | **RUNTIME** 4-30H | **BEAM** 89M | **IP RATING** IP65/IK07



HT-900R | HIGH POWER INDUSTRIAL HEADTORCH

- 900 lumen white CREE LED, 6500k
- Wide angle light spread with bright central spot
- Super tough construction with top quality cables
- Memory function - remembers last mode used
- Adjustable non-slip silicone lined headband included
- 4 x Helmet clips included
- 72° rotational head
- IP65 dust & water resistant
- IK07 shock proof - 2m drop resistant
- Useful battery level and charging indicator
- 1A USB-C charging - 4.5 hours charge time
- 1m USB-C charging cable included

BATTERY 3.7v 2600mAh Li-Ion Battery
WEIGHT 185g
DIMENSIONS headtorch 44 x 39 x 46mm / battery pack: 86 x 36 x 37 mm

LUMEN 900LM | **RUNTIME** 4.5-100H | **BEAM** 82M | **IP RATING** IP65/IK07



HL-11R | INDUSTRIAL SUPER BRIGHT HEADTORCH

- 1100 lumen white CREE LED, 6500k
- Easy twist smooth dimming switch
- Retractable shield to provide spot & flood beams
- 2 x High power 18650 2600mAh Li-ion batteries included
- Intelligent parallel circuitry - works with 1 or 2 batteries
- Super tough construction with top quality cables
- 45° rotational head
- Adjustable non-slip silicone lined headband included
- Useful battery level and charging indicators
- 2A USB-C charging - 4.5 hours charge time
- 1m USB-C charging cable included
- Presented in an EVA hard shell zipped case

BATTERY 2 x 3.7v 2600mAh 18650 Li-ion (inc.)
WEIGHT 275g (with 2 batteries)
DIMENSIONS headtorch 38 x 60 x 45mm / battery pack 53 x 90 x 45mm

LUMEN 1100LM | **RUNTIME** 4-148H | **BEAM** 167M | **IP RATING** IPX6



PS-HDL9R | HIGH POWER INDUSTRIAL HEADTORCH

- 750 lumen white CREE LED, 6500k
- Red rear battery pack light (ON & FLASH)
- Intelligent parallel circuitry - works with 1 or 2 batteries
- Anti-dazzle retractable light shield
- Super wide angle light spread
- Easy twist smooth dimming power switch
- 45° rotational head
- Super tough construction with top quality cables
- Adjustable non-slip silicone lined headband included
- Fast 2A USB-C charging - 3.5 hours charge time
- Useful battery level and charging indicators
- 1m USB-C charging cable included
- Presented in an EVA hard shell zipped case

BATTERY 2 x 3.7v 2000mAh 18650 Li-ion (inc.)
WEIGHT 275g (with 2 batteries)
DIMENSIONS headtorch 38 x 60 x 45mm / battery pack 65 x 90 x 45mm

LUMEN 750LM | **RUNTIME** 4-260H | **BEAM** 100M | **IP RATING** IPX6



HT-650R | DUAL POWER DUAL LED HEADTORCH

- 650 lumen white COB LED, 6500k
- Circular COB LED for wide flood lighting
- Additional 450 lumen CREE LED spot beam, 6500K
- Dual Power - rechargeable or 3 x AAA batteries
- Memory function - remembers last mode used
- Super tough construction with rubberised coating
- 60° rotational head
- Adjustable non-slip silicone lined headband included
- IK07 shock proof - 2m drop resistant
- Rechargeable 3.8v Li-Po battery included
- Red-to-Green charging indicator on battery
- Fast 1A USB-C charging - 3.5 hours charge time
- 1m USB-C charging cable included

BATTERY 3.8v 1100mAh Li-Polymer Battery (inc) or 3 x 1.5v AAA Alkaline Batteries (not inc.)
WEIGHT 89g
DIMENSIONS headtorch 46.3 x 68.7 x 40mm

LUMEN 650LM | **RUNTIME** 2-30H | **BEAM** 84M | **IP RATING** IP65/IK07



HL-8R | DUAL BEAM SENSOR HEADTORCH

- 475 lumen white SMD LEDs, 6500k
- 2 x Side SMD LEDs for wide flood lighting
- 250 lumen SMD LED for long distance spot beam
- Sensor mode for hands-free operation
- Memory function - remembers last mode used
- Super tough construction with rubberised coating
- IK07 shock resistant
- IP65 dust & water resistant
- 1m impact resistant
- 60° rotational head
- Adjustable non-slip silicone headband included
- Green flash-to-Green charging indicator light
- Fast 1A USB-C charging - 2.5 hours charge time
- 1m USB-C charging cable included

BATTERY 3.7v 1500mAh Li-Polymer
WEIGHT 111g
DIMENSIONS headtorch 47.5 x 78.5 x 46mm

LUMEN 475LM | **RUNTIME** 4-35H | **BEAM** 90M | **IP RATING** IP65/IK07



HT-450 | DUAL LED HEADTORCH

- 450 lumen white CREE LED, 6500k
- With diffuser for wide flood lighting
- Additional 250 lumen white CREE LED spot beam, 6500k
- With collimator lens for long distance beam
- Memory function - remembers last mode used
- 3 x AAA Alkaline batteries included
- Adjustable non-slip silicone lined headband included
- 60° rotational head
- IP65 dust & water resistant
- IK07 shock proof
- 2m Drop resistant

BATTERY 3 x 1.5v AAA Alkaline Batteries (Included)
WEIGHT 82g
DIMENSIONS headtorch 46.3 x 68.7 x 35.9mm

LUMEN 450LM | **RUNTIME** 3.5-30H | **BEAM** 134M | **IP RATING** IP65/IK07



PS-HDL6R | DUAL POWER HELMET HEADTORCH

- 350 lumen white SMD LEDs, 6500k
- Network Rail Approved
- Dual Power - rechargeable battery included or 3 x AAA batteries
- 3M VHB adhesive helmet mount (included)
- Adjustable non-slip silicone lined headband included
- Anti-dazzle retractable light shield
- 45° rotational head
- 3 x AAA battery cartridge included
- Battery level & charging indicator
- Direct charging removable battery - 1A USB-C with 4 hour charge time
- Spare batteries can be purchased separately
- 1m USB-C charging cable included

BATTERY 3.7v 1800mAh Li-Polymer (inc.) or 3 x AAA Battery Cartridge (batteries not inc.)
WEIGHT 86g (with lithium battery) / 94g (with 3 x AAA batteries)
DIMENSIONS headtorch 50 x 65 x 45mm

LUMEN 350LM | **RUNTIME** 2-59H | **BEAM** 27M | **IP RATING** IPX6



HL-5R | SENSOR HEADTORCH

- 325 lumen white COB LED, 6500k
- Sensor mode for hands-free operation
- Super tough construction with rubberised coating
- 60° rotational head
- Adjustable non-slip silicone lined headband included
- IP65 dust & water resistant
- IK07 Shock resistant
- 1m Drop resistant
- Red-to-Green charging indicator
- Fast 1A USB-C charging - 2.5 hours charge time
- 1m USB-C charging cable included

BATTERY 3.7v 1500mAh Li-Polymer
WEIGHT 110g
DIMENSIONS headtorch 48 x 79 x 46mm

LUMEN 325LM | **RUNTIME** 2-5.5H | **BEAM** 38M | **IP RATING** IP65/IK07



HL-4R | USB HELMET HEADTORCH

- 275 lumen white CREE LED, 6500k
- 2 x 5mm red LEDs for night vision - static & flashing modes
- Easy push micro switch
- 45° rotational head
- Ultra-smooth reflector for long distance beam
- Super lightweight design
- Strong ABS housing
- 1m impact resistant
- Adjustable non-slip silicone lined headband included
- 3M VHB adhesive helmet mount included
- Useful drawstring bag included
- Red-to-Green charging indicator
- Fast 1A USB-C charging - 2.5 hour charge time
- 1m USB-C charging cable included

BATTERY 3.7v 1800mAh Li-Polymer
WEIGHT 78g
DIMENSIONS headtorch 63 x 40 x 42mm

LUMEN 275LM | **RUNTIME** 6.5-170H | **BEAM** 95M | **IP RATING** IPX5



PS-HDL2 | HELMET HEADTORCH

- 200 lumen white CREE LED, 6500k
- 2 x 5mm LEDs for floodlight modes
- Easy push micro switch
- Ultra-smooth reflector for long distance beam
- 45° rotational head
- 3 x AAA Energizer alkaline batteries included
- Super lightweight design
- Strong ABS housing
- 1m impact resistant
- IPX6 water resistant
- Adjustable non-slip silicone lined headband included
- 3M VHB adhesive helmet mount included

BATTERY 3 x 1.5v AAA Energizer Alkaline Batteries (inc.)
WEIGHT 88g (with batteries)
DIMENSIONS headtorch 47 x 62 x 37mm

LUMEN 200LM | **RUNTIME** 5-185H | **BEAM** 95M | **IP RATING** IPX6



BLT-1 | USB BEANIE LIGHT

- 250 lumen white COB LEDs, 6500k
- Red 625nm static & flashing modes
- Light is easily removed from hat
- Built-in USB-A connector with protective cover
- Directly charged via a USB port
- High quality 3.7v 420mAh li-po battery
- Super fast charge time - 1.5 hours
- Red-to-Green charging indicator
- IPX5 water resistant
- Comfortable knitted Beanie, one size fits all
- Fabric: 35% acrylic 65% polyester
- Machine washable at 30°

BATTERY 3.7v 420mAh Li-Polymer
WEIGHT 27g (light only)
DIMENSIONS 73.5 x 41 x 15mm

LUMEN 250LM | **RUNTIME** 2-30H | **BEAM** 13M | **IP RATING** IPX5



NL-350R | RECHARGEABLE NECK LIGHT

- 350 lumen 6500k white SMD LEDs
- Super lightweight, adjustable and comfortable
- 2 light heads can be adjusted independently
- Super tough nylon & polycarbonate construction
- Up to 120° wider lighting angle
- IK07 Shock proof - 2m drop resistant
- IP54 Dust & water resistant
- Circuit protection prevents battery from over-charging or over-discharging

- High quality 3.7v 700mAh Li-ion battery
- 3 colour LED battery level indicator
- Charging indicator - Green flash: Charging / Green: Fully Charged
- Low battery 3x warning flash - reminds when charging is needed
- 1A USB-C charging cable included - quick 2.5 hour charge time

BATTERY 3.7v 700mAh Li-ion
WEIGHT 140g
DIMENSIONS 230 x 150 x 23mm

LUMEN 350LM | **RUNTIME** 2-10H | **BEAM** 45M | **IP RATING** IP54/IK07



PB-7800 | POWERBANK WITH FLASHLIGHT

- Industrial magnetic powerbank with flashlight
- High quality 3.7v 7800mAh Li-ion battery
- Super tough nylon and TPR construction
- Intelligent multiple outputs - 5V-2.4A / 9V-2A / 12V-1.5A
- Fast 2A USB-C charging - 5 hour charge time
- Over-charge, over-load, deep-discharge and short-circuit protection
- Battery level and charging indicators

- 250 lumen 6500k SMD LED flashlight with flashing mode
- IK07 Shock proof - 2m drop proof
- IP65 Dust & water resistant
- Super strong magnetic base
- Sturdy rear metal pocket clip
- 1m high quality USB-C charging cable included

BATTERY 3.7v 7800mAh Li-ion
WEIGHT 265g
DIMENSIONS 114 x 65 x 32mm

LUMEN 250LM | **RUNTIME** 35H | **BEAM** 21M | **IP RATING** IP65/IK07



L-1800 | DUAL LED LANTERN

- 1800 lumen white spot beam LED, 6500k
- Additional 1000 lumen COB LED floodlight, 6500k
- Red static & red flashing modes
- Super tough polycarbonate, ABS & aluminium construction
- Easy press dual switches for easy mode selection
- Threaded hole in the base for attaching to tripods

- Glow-in-the-Dark strip around reflector
- Convenient shoulder carry strap included
- Battery level & charging indicator LEDs
- Super high power 18,000mAh li-ion battery
- Multiple USB power bank outputs - 5V-3A / 9V-2A / 12V-1A
- Intelligent multiple USB-C charging inputs - 5V-3A / 9V-2A
- Faster 2A and 3A charging - 8 or 7 hour charge time

BATTERY 3.7v 18,000mAh Li-ion
WEIGHT 773g
DIMENSIONS 108 x 200 x 131mm

LUMEN 1800LM | **RUNTIME** 9-390H | **BEAM** 760M | **IP RATING** IPX6



PT-2 | ALUMINIUM PENLIGHT

- 275 lumen white CREE LED, 6500k
- Hard anodized die cast matte aluminium body
- Tactical rubberised micro switch operation
- 2 light mode settings
- Flawless smooth reflector for long distance beam
- Convenient battery replacement - 2 x AAA Alkaline
- IP66 dust and waterproof
- Impact resistant to 1m
- Convenient detachable pocket clip

BATTERY 2 x 1.5v AAA Duracell Alkaline Batteries (inc.)
WEIGHT 65g (with batteries)
DIMENSIONS 137 x 18 x 25mm

LUMEN 275LM | **RUNTIME** 1.5-15H | **BEAM** 90M | **IP RATING** IP66



FL-550R | ALUMINIUM USB FLASHLIGHT

- 550 lumen white Nichia LED, 6500k
- Hard anodized die cast matte aluminium body
- Tactical rubberised micro switch operation
- 3 light mode settings and 8Hz defence strobe
- Flawless smooth reflector for long distance beam
- IP67 dust and waterproof - 1m submersible
- Impact resistant to 1m
- Built-in USB rubberised charging port cover
- Battery level and charging indicator LED
- 1A USB-C charging - fast 2 hours charge time
- High quality USB-C charging cable included
- Nylon velcro holster & safety nylon wrist strap included

BATTERY 3.7v 800mAh 14500 'Fuel Bar' Li-ion (inc.)
WEIGHT 109g (with battery)
DIMENSIONS Ø30 x 113mm

LUMEN 550LM | **RUNTIME** 2.5-21H | **BEAM** 182M | **IP RATING** IP67



FL-1300R | ALUMINIUM USB FLASHLIGHT

- 1300 lumen white Nichia LED, 6500k
- Hard anodized die cast matte aluminium body
- Tactical rubberised micro switch operation
- 3 light mode settings and 8Hz defence strobe
- Flawless smooth reflector for long distance beam
- IP67 dust and waterproof - 1m submersible
- Impact resistant to 1m
- Built-in USB rubberised charging port cover
- Battery level and charging indicator LED
- Fast 2.1A USB-C charging - 2.5 hours charge time
- High quality USB-C charging cable included
- Nylon velcro holster & safety nylon wrist strap included

BATTERY 3.7v 2600mAh 18650 'Fuel Bar' Li-ion (inc.)
WEIGHT 229g (with battery)
DIMENSIONS Ø38 x 139mm

LUMEN 1300LM | **RUNTIME** 3.5-85H | **BEAM** 291M | **IP RATING** IP67



WCFL12 | WIRELESS FLASHLIGHT

- 1200 lumen white LED, 6500K
- Ultra tough nylon, aluminium & TPR construction
- Multi-faceted reflector for long distance beam
- Dual switches for easy mode selection
- Press & hold for 2 seconds for Strobe mode
- Memory function - remembers last mode used
- IP68 dust & water proof - 1m submersible
- IK07 super tough shock resistant construction
- 2m drop resistant

- 3 Battery level and charging indicators
- Built-in USB-C charging port with protective cover for direct charging
- 2A direct USB-C charging - fast 4 hour charge time
- 1m USB-C charging cable included
- Can be wirelessly charged with Unilite WCSGL or WCDBL wireless charging pads

BATTERY 3.7v 2600mAh Li-ion
WEIGHT 215g
DIMENSIONS Ø41 x 159mm



LUMEN 1200LM | **RUNTIME** 2-200H | **BEAM** 251M | **IP RATING** IP68/IK07



WCIL11 | WIRELESS INSPECTION LIGHT

- 1100 lumen white COB LED, 6500K
- Additional 220 lumen SMD LED top torch, 6500K
- Ultra solid nylon construction with over-moulded TPR for extra durability and grip
- Easy press moulded rear switch
- Memory function - remembers last mode used
- 3 Super strong magnets on the back
- 180° Rotating handle with super strong magnets
- 2 x 360° rotating retractable hanging hooks

- IK07 super tough shock resistant construction
- 2m drop resistant
- 3 Battery level and charging indicators
- Built-in USB-C charging port with protective cover for direct charging
- 2A direct USB-C charging - 4.5 hour charge time
- 1m USB-C charging cable included
- Can be wirelessly charged with Unilite WCSGL or WCDBL wireless charging pads

BATTERY 3.7v 3350mAh Li-ion
WEIGHT 396g
DIMENSIONS 260 x 53 x 39.3mm



LUMEN 1100LM | **RUNTIME** 1.5-7.5H | **BEAM** 47M | **IP RATING** IP65/IK07



WCHX7 | WIRELESS COMPACT WORK LIGHT

- 700 lumen white COB LED, 6500K
- Additional 275 lumen SMD LED spot beam, 6500K
- Ultra tough nylon, aluminium & TPR construction
- 180° Rotating stand with super strong magnets in the base
- Memory function - remembers last mode used
- IK07 super tough shock resistant construction
- 2m drop resistant

- 3 Battery level and charging indicators
- Built-in USB-C charging port with protective cover for direct charging
- 2A direct USB-C charging - 4 hour charge time
- 1m USB-C charging cable included
- Can be wirelessly charged with Unilite WCSGL or WCDBL wireless charging pads

BATTERY 3.7v 2600mAh Li-ion
WEIGHT 218g
DIMENSIONS 97 x 83 x 39mm



LUMEN 700LM | **RUNTIME** 2.5-10H | **BEAM** 118M | **IP RATING** IP65/IK07



WCHT5 | WIRELESS DUAL LED HEADTORCH

- 550 Lumen white COB LED, 6500k
- Additional 450 lumen 6500K CREE LED spot beam LED
- Super tough polycarbonate construction
- 125° Rotational head
- Memory function - remembers last mode used
- Adjustable non-slip silicone lined headband
- IK07 super tough construction - 2m drop proof
- High quality 3.7v 1500mAh Li-po battery
- Green Flash-to-Solid Green charging indicator

- Low battery 3x warning flash - reminds when charging is needed
- Built-in USB-C direct charging port with protective cover
- 2A direct USB-C charging - fast 3 hour charge time
- 1m USB-C charging cable included
- Can be wireless charged using Unilite WCSGL or WCDBL wireless charging pads

BATTERY 3.7v 1500mAh Li-po
WEIGHT 104g
DIMENSIONS 70 x 52 x 46mm



LUMEN 550LM | **RUNTIME** 4-21H | **BEAM** 84M | **IP RATING** IP65/IK07

WCSGL | SINGLE WIRELESS CHARGING PAD

- Super tough nylon polymer & ABS construction
- Strong magnets on the rear for attaching to magnetic surfaces
- Built-in screw holes for wall mounting
- Strong magnets on the front for attaching Unilite wireless products
- Pull-out secure phone holder for charging wireless mobile phones
- IK07 tough construction - 2m drop proof
- IP20 Dust resistant
- Built-in USB-C charging port
- Normal Charge Input: 5V-2A

- Fast Charging Inputs: 12V-1.5A / 9V-2A / 5V-3A
- Charging cable not included
- Quick charging 3.0 USB-C cables available to purchase separately



WEIGHT 335g | **DIMENSIONS** W 190.5 x H 101.2 x D 28.1mm

WCDBL | DOUBLE WIRELESS CHARGING PAD

- Super tough nylon polymer & ABS construction
- Strong magnets on the rear for attaching to magnetic surfaces
- Built-in screw holes for wall mounting
- Strong magnets on the front for attaching Unilite wireless products
- Pull-out secure phone holder for charging wireless mobile phones
- IK07 tough construction - 2m drop proof
- IP20 Dust resistant
- Built-in USB-C charging port
- Normal Charge Input: 5V-2A (only suitable for charging 1 item at a time)

- Fast Charging Inputs: 12V-1.5A / 9V-2A / 5V-3A
- Quick charging 3.0 USB-C cable included & required for dual charging
- ***Minimum charge input for charging 2 items at the same time requires 5V-3A input source (charger plug not inc.)*



WEIGHT 450g | **DIMENSIONS** W 290.5 x H 101.2 x D 28.1mm





ATEX-RA2 | INTRINSICALLY SAFE RIGHT ANGLE TORCH

- 350 lumen white CREE LED, 6500k
- ATEX Zone 0 gas compliant
- Suitable for mining
- Safety release valve to release hydrogen gases
- Chemical and corrosion resistant
- Rubberised head and grips for durability
- Ultra strength polycarbonate housing
- Convenient rear stainless steel pocket clip
- Safety locking battery compartment
- Easy push micro switch operation
- IP54 dust and water resistant

BATTERY 4 x 1.5v AA Alkaline Batteries (not inc.)
WEIGHT 250g (without batteries)
DIMENSIONS 183 x 69 x 63mm



LUMEN 350LM | **RUNTIME** 6.5-13H | **BEAM** 288M | **IP RATING** IP54

ATEX-FL4 | INTRINSICALLY SAFE FLASHLIGHT

- 150 lumen white CREE LED, 6500k
- ATEX Zone 0 gas compliant
- Safety release valve to release hydrogen gases
- Chemical and corrosion resistant
- Rubberised head & handle for greater durability
- Industrial strength polycarbonate housing
- Detachable pocket clip included for hands free use
- Safety locking battery compartment
- Polycarbonate lens and smooth reflector for long distance beam
- Optional brackets available for helmets
- IP67 dust and waterproof
- 3m submersible

BATTERY 4 x 1.5v AA Alkaline Batteries (not inc.)
WEIGHT 115g (without batteries)
DIMENSIONS 174 x 47 x 47mm



LUMEN 150LM | **RUNTIME** 6-69H | **BEAM** 235M | **IP RATING** IP67

ATEX-H2 | INTRINSICALLY SAFE HEADTORCH

- 225 lumen white CREE LED, 6500k
- ATEX Zone 0 gas compliant
- Safety release valve to release hydrogen gases
- Strong ABS housing with durable synthetic rubber coating
- Safety locking battery compartment
- Easy press rubberised switch
- 2 mode light settings
- 90° rotational head
- Adjustable non-slip silicone lined headband included
- IP67 dust and waterproof
- 1m submersible

BATTERY 3 x 1.5v AAA Alkaline Batteries (not inc.)
WEIGHT 130g (without batteries)
DIMENSIONS headtorch 80 x 50 x 45mm



LUMEN 225LM | **RUNTIME** 5-12H | **BEAM** 115M | **IP RATING** IP67





OP-1B | HEAVY DUTY STORAGE POUCHES

- Super heavy duty set of 2 storage zip pouches
- Made from 600D ultra tough PVC impregnated nylon
- Thick waterproof lining on the inside
- Large mesh windows on the front
- Heavy duty Unilite branded #8 YKK zippers
- Stylish black reflective strips for added safety
- With extra silver reflective branding details
- Additional Velcro flap pockets on the back
- External Unilite branded snap-hook carabiners

DIMENSIONS Small: H 150 x W 230mm | Large: H 180 x W 200mm



OP-2B | HEAVY DUTY STAND-UP STORAGE POUCHES

- Super heavy duty set of 2 storage zip pouches
- Made from 600D ultra tough PVC impregnated nylon
- Thick waterproof lining on the inside
- Large mesh windows on the back
- Heavy duty Unilite branded #8 YKK zippers
- Stylish black reflective strips for added safety
- With extra silver reflective branding details
- External Unilite branded snap-hook carabiners
- Reinforced 60mm base depth allows pouches to stand-up

DIMENSIONS Small: H 150 x W 210mm | Large: H 200 x W 250mm



OP-3B | SUPER HEAVY DUTY STORAGE POUCH

- Super heavy duty storage zip pouch
- Made from 900D ultra tough PVC impregnated nylon
- Large main internal compartment with extra thick padded waterproof lining
- Extra heavy duty Unilite branded #10 YKK zipper
- Super heavy duty waterproof exterior layer around the base & sides
- Large mesh expanding window pocket on the front
- Stylish black reflective strips for added safety
- With extra silver reflective branding details
- Mixture of 5 additional Velcro flap & Zip pockets using #8 YKK zippers
- 2 External 'D' rings attached using marine grade stainless steel rivets
- Comes with a 12Kn carabiner and A6 waterproof stone paper notebook

DIMENSIONS H 270 x W 190 x D 110mm



KC1 | HEAVY DUTY KNIFE CUTTER

- Heavy duty stainless steel, ABS & TPR construction
- 8 x 18mm snap-off SK2 black steel blade
- Multi-position retractable quick slide button with auto-lock mechanism
- 2 x replacement snap-off blades conveniently stored inside
- Quick and easy blade change
- Convenient hole for attaching a lanyard

WEIGHT 100g | **DIMENSIONS** Length: 167mm

KC2 | HEAVY DUTY KNIFE CUTTER

- Heavy duty nickel, TPR and ABS construction
- Retractable SK5 black steel blades
- 4 replacement blades conveniently stored inside
- Multi-position retractable quick slide button
- Sliding locking button mechanism
- Quick release blade change
- Convenient hole for attaching a lanyard
- Accepts most standard utility blades

WEIGHT 183g | **DIMENSIONS** Length: 185mm



UK1 | FOLDING UTILITY KNIFE

- Heavy duty nickel, TPR and ABS construction
- 4 x SK5 black steel blades included
- 3 replacement blades conveniently stored inside
- Multi-positional folding design
- Easy press unlocking button
- Quick release blade change
- Convenient wire/strap cutter slot
- Useful hole for attaching a lanyard
- Accepts most standard utility blades
- Folded length: 116mm

WEIGHT 125g | **DIMENSIONS** Extended Length: 175mm



FK3 | HEAVY DUTY FOLDING UTILITY KNIFE

- Heavy duty folding utility knife
- High-carbon 3Cr13 stainless steel blade
- 'Clip point' blade with serrated edge and tapered spine swedge
- Blade spine includes thumb rise for extra grip
- Blade hardness 52-54 HRC
- Assisted one-handed opening with thumb studs
- Easy to operate one-handed 'Liner lock' mechanism
- Ultra tough ergonomic aluminium handle with front Quillion finger guard
- Pocket clip for easy carrying
- Hole in the handle for adding a lanyard

WEIGHT 119.5g | **DIMENSIONS** Extended Length: 198mm



EK4 | HEAVY DUTY FOLDING UTILITY KNIFE

- Heavy duty folding utility knife
- High-carbon 3Cr13 stainless steel blade
- 'Drop point' blade with serrated edge and tapered spine swedge
- Blade spine includes thumb rise for extra grip and 2 wire stripper notches
- Assisted one-handed opening with thumb studs
- Blade hardness 52-55 HRC
- Ultra tough ergonomic aluminium handle with front Quillion finger guard
- Easy to operate one-handed 'Framelock' mechanism
- Pocket clip for easy carrying

WEIGHT 135g | **DIMENSIONS** Extended Length: 195mm



EK5 | HEAVY DUTY FOLDING UTILITY KNIFE

- Heavy duty folding utility knife
- Super high-carbon 7Cr17MoV stainless steel blade with high tensile strength
- 'Sheepsfoot' blade with cable stripper notch
- High blade hardness 56-58 HRC
- Crescent nail pull in the blade spine for easy opening
- Sharpening 'choil' notch at the blade plunge line for easier sharpening
- Durable and easy to operate 'Lockback' mechanism
- Ultra tough ergonomic aluminium handle
- Hole in the handle for adding a lanyard
- Super low-profile at only 10mm thick

WEIGHT 107g | **DIMENSIONS** Extended Length: 182mm



ES-6 | HEAVY DUTY 6" ELECTRICIANS SCISSORS

- Ultra tough 6" professional electricians scissors (160mm)
- Whole steel frame for high resistance & durability
- Industrial strength polypropylene handles with full TPR coating for superior grip & comfort
- High grade 4034 Japanese stainless steel 4.0mm thick polished blades with 40mm cutting edge
- Black 'DLC' (diamond-like-carbon) coating on blades for extra sharpness
- High hardness blades (58±2 HRC) with anti-slip serrated edge
- 2.5mm² & 1.5mm² wire strippers & wire crimping terminal
- Notch in the blades for cutting/stripping 50mm² cable
- Includes heavy duty nylon clip-on belt sheath
- Suitable for cutting aluminium, copper and soft cable

WEIGHT 153g | **DIMENSIONS** Length: 160mm | Blade Length: 40mm



MFS-8 | HEAVY DUTY 8" MULTI-FUNCTION SCISSORS

- Ultra tough 8" professional multi-function scissors (205mm)
- Industrial strength polypropylene handles
- With added TPR moulding for superior grip & comfort
- High grade 420 J2 Japanese stainless steel 3.0mm thick polished blades with 60mm cutting edge
- Black 'DLC' (diamond-like-carbon) coating on blades for extra sharpness
- High hardness blades (53±2 HRC) with anti-slip serrated edge
- Extra functions include safety box cutter, wire cutter notch and jar opener/nut cracker
- Includes polypropylene safety sheath
- Suitable for cutting soft materials such as tin sheets, carpets, corrugated cartons, aluminium sheets, plastics, CD, cards... etc.

WEIGHT 142g | **DIMENSIONS** Length: 205mm | Blade Length: 60mm



MT5M4SL | HEAVY DUTY TAPE MEASURE

- Heavy duty 5m tape measure with 19mm wide blade
- Automatic self-lock secures the blade, with easy press button to release
- High performance nylon coated blade
- 1.8m/6ft horizontal stand-out blade
- Double riveted carbon steel hook
- Dual colour double sided imperial & metric blade
- Superior internal mechanism provides smooth operation
- Durable rear pocket clip - wont detach even if screw loosens
- Impact resistant TPR covered ABS casing
- Drop tested from 1.5m

WEIGHT 240g | **DIMENSIONS** H 74 x W 81 x D 42mm



MT5M2 | HEAVY DUTY TAPE MEASURE

- Heavy duty 5m tape measure with 27mm wide blade
- Ultra high performance double nylon coated 'SUPERBLADE' gives 5 x extended life
- 2.9m/9.5ft horizontal stand-out blade
- SUPERBLADE withstands durability tests of falling sand particles with 60 litres of salt spray for 100 hours
- Magnetic triple riveted stainless steel dual hook with 1kg suction capacity
- Dual colour double sided imperial & metric blade
- Durable rear pocket clip - wont detach even if screw loosens
- Powerful push lock secures the blade
- Superior internal mechanism provides smooth operation
- Impact resistant TPR covered ABS casing
- Drop tested from 9m

WEIGHT 322g | **DIMENSIONS** H 76.5 x W 79 x D 51.8mm



MT8M3 | SUPER HEAVY DUTY TAPE MEASURE

- Super heavy duty 8m tape measure with 32mm wide blade
- Ultra high performance double nylon coated 'SUPERBLADE' gives 5 x extended life
- 4m/13ft horizontal stand-out blade
- SUPERBLADE withstands durability tests of falling sand particles with 60 litres of salt spray for 100 hours
- Magnetic triple riveted stainless steel dual hook with 1kg suction capacity
- Dual colour double sided imperial & metric blade
- Durable rear pocket clip - wont detach even if screw loosens
- Powerful push lock secures the blade
- Superior internal mechanism provides smooth operation
- Impact resistant TPR covered ABS casing
- Drop tested 12 times from 3m

WEIGHT 603g | **DIMENSIONS** H 90 x W 90 x D 59mm

SG-YDS | SAFETY GLASSES - DARK SMOKE LENSES

- Tough flexible polycarbonate frame
- 8-Base curved toughened polycarbonate lenses
- Dark smoke lens tinting
- K & N anti-scratch & anti-fog lens coatings
- 99% UV A/B/C protection (EN172)
- Flexible PC & TPR co-injected side arms
- Side temple ventilation
- Adjustable rubberised non-slip nose pads
- Reinforced nose bridge
- Micro-fibre drawstring storage bag included

LENS MARKINGS

- Lens Filters: 5 (UV EN172) 2.5 (Dark Smoke)
- Optical Class: 1 (high optical quality)
- Lens Coatings: Anti-Scratch - K Anti-Fog - N
- Mechanical risk: Low energy impact - F
- High speed particles at extreme temperatures - T

WEIGHT 28g



CERTIFICATIONS CE/UKCA - EN166 | USA - ANSI Z87.1 | AU/NZ - AS/NZS 1337.1

SG-YCB | SAFETY GLASSES - CLEAR BLUE LIGHT LENSES

- Tough flexible polycarbonate frame
- 8-Base curved toughened polycarbonate lenses
- Clear 420Cut blue light blocking lenses
- Blocks harmful HEV blue light up to 420nm
- K & N anti-scratch & anti-fog lens coatings
- 99% UV A/B/C protection (EN170)
- Flexible PC & TPR co-injected side arms
- Adjustable rubberised non-slip nose pads
- Reinforced nose bridge
- Micro-fibre drawstring storage bag included

LENS MARKINGS

- Lens Filters: 2C (UV EN170) 1.2 (Clear)
- Optical Class: 1 (high optical quality)
- Lens Coatings: Anti-Scratch - K Anti-Fog - N
- Mechanical risk: Low energy impact - F
- High speed particles at extreme temperatures - T

WEIGHT 28.5g



CERTIFICATIONS CE/UKCA - EN166 | USA - ANSI Z87.1 | AU/NZ - AS/NZS 1337.1

SG-YFG | SAFETY GLASSES - CLEAR LENSES & FOAM GASKET

- Tough flexible polycarbonate frame
- 8-Base curved toughened polycarbonate clear lenses
- Hytrel black back frame with EVA foam gasket
- K & N anti-scratch & anti-fog lens coatings
- 99% UV A/B/C protection (EN170)
- Flexible PC & TPR co-injected side arms
- With side temple ventilation
- Adjustable TPR non-slip nose pads
- Reinforced nose bridge
- Micro-fibre drawstring storage bag included

LENS MARKINGS

- Lens Filters: 2C (UV EN170) 1.2 (Clear)
- Optical Class: 1 (high optical quality)
- Lens Coatings: Anti-Scratch - K Anti-Fog - N
- Mechanical risk: Low energy impact - F
- High speed particles at extreme temperatures - T

WEIGHT 39.5g



CERTIFICATIONS CE/UKCA - EN166 | USA - ANSI Z87.1 | AU/NZ - AS/NZS 1337.1



SG-Y10 | SAFETY GLASSES - INDOOR/OUTDOOR LENSES

- Super tough flexible nylon-polymer frame
- 8-Base curved toughened polycarbonate lenses
- Toughened polycarbonate lenses
- Indoor & outdoor mirror lens coating
- With 99% UV A/B/C protection (EN170)
- Anti-scratch & anti-fog lens coatings
- Flexible PC & TPR co-injected side arms
- Rubberised TPR inner arm grips
- TPR non-slip nose grip with reinforced bridge
- Side TPR temple shields with ventilation
- Micro-fibre drawstring storage bag included

LENS MARKINGS

- Lens Filters: 2 (UV EN170) 1.4 (Indoor & Outdoor)
- Optical Class: 1 (high optical quality)
- Lens Coatings: Standard Anti-Scratch & Anti-Fog
- Mechanical risk - Low energy impact - F
- High speed particles at extreme temperatures - T

WEIGHT 33.5g



CERTIFICATIONS CE/UKCA - EN166 | USA - ANSI Z87.1 | AU/NZ - AS/NZS 1337.1

GLASSES-KIT | SAFETY GLASSES ACCESSORIES KIT

The perfect accessory for our range of Unilite safety glasses.

Built tough to protect your safety glasses, this kit includes a hard-shell EVA foam zip case made from ultra tough material, a micro-fibre cloth & a neoprene neck strap to keep your safety glasses secure.

Kit Includes:

- Hard shell EVA foam zip case with carabiner hook
- Micro-fibre cloth
- Neoprene neck strap

KIT WEIGHT 72g | **ZIP CASE DIMENSIONS** 170 x 68 x 82.5mm





UG-12C4 | HEAVY DUTY CUT-D IMPACT GLOVES

- Cut resistant gloves with full dorsal TPR impact protection
- Flexible lightweight design, TPR weighs less than 60g
- Heavy duty 15-Gauge high-performance polyethylene (HPPE) yarn interwoven with steel and glass fibres for added strength and high cut resistance
- Sandy nitrile half-dip coating offers excellent grip
- TPR is sonic welded to the glove for greater longevity
- Adjustable TPR velcro wrist strap for secure fit
- Synthetic leather stitched cuff for durability
- Touch screen technology
- EN 388:2016 mechanical hazard protection: 4X42DP - cut level D
- ANSI/ISEA 138 impact resistant level 2
- ANSI cut resistant level A4
- Available in 5 EU sizes - 7/S, 8/M, 9/L, 10/XL & 11/XXL.



CERTIFICATIONS EN ISO 21420:2020 | EN 388:2016+A1:2018 | ANSI/ISEA 2016 | ANSI/ISEA138:2019



UG-TW1 | THERMAL WATERPROOF GLOVES

- Warm thermal waterproof gloves
- Uses rPET polyester yarn that has been extruded from waste plastic bottles
- Superior quality soft & supple 0.7-0.8mm full grain goat leather
- Reinforced leather top of finger tips for extra durability
- Suitable for use in cold & wet environments due to waterproof HIPORA membrane
- Reflective silver strips for added visibility
- Elasticated 360° wrist for a secure warm fit
- Ergonomically designed for improved dexterity
- Touch screen technology in the thumb & index finger
- EN 388:2016 mechanical hazard protection: 2X32B - cut level B
- EN 511:2006 protection against Cold hazards - 22X
- Available in 5 EU sizes - 7/S, 8/M, 9/L, 10/XL & 11/XXL.



CERTIFICATIONS EN ISO 21420:2020 | EN 388:2016+A1:2018 | EN 511:2006



LARGE-MAGNET | MAGNET

- Ultra strong heavy duty magnet
- Made from steel and aluminium
- Locking wing nut securely holds a site light
- Can be used with the following Unilite site lights: CRI-2300, CRI-3350, SLR-4400, SLR-4750, SLR-6000, RF-2000, RF-3300, RF-5400 and MTB-5300

WEIGHT 169g | **SIZE** H 37 x Ø 54mm

TRIPOD-SGL | SINGLE HEAD TRIPOD

- To hold a single work light
- Extendable height range between 0.7-1.8m
- Work lights can be screwed directly to the top of the tripod or simply hooked on, using the bracket
- Toughened aircraft grade aluminium construction
- ABS stability feet to prevent slipping

WEIGHT 2560g | **DIMENSIONS** 1240 x 1240 x 1800mm

TRIPOD-MINI | MINI TRIPOD

- Heavy duty glass-filled nylon and TPR construction
- 360° ball joint head with integrated spirit level
- Easy flip lock to secure ball joint in position
- 1/4" screw for mounting devices
- Protective screw cap with hanging loop
- Non-slip grip ridges on the legs
- Folded height 170mm, opened height 120mm
- Max load capacity 2.5kg

WEIGHT 176g | **SIZE** 120mm

TRIPOD-SW | SINGLE HEAD TRIPOD WITH WHEELS & BRAKES

- To hold a single work light
- Sturdy castor wheels for easy manoeuvrability with independent foot brakes
- Extendable height range between 0.7-1.8m
- Work lights can be screwed directly to the top of the tripod or simply hooked on, using the bracket
- Toughened aircraft grade aluminium construction

- Quick assembly and dismantling using easy twist ergonomic height adjusters
- Can be used with the following Unilite site lights: CRI-2300, CRI-3350, SLR-4400, SLR-4750, SLR-6000, RF-2000, RF-3300, RF-5400 and MTB-5300

WEIGHT 3500g | **DIMENSIONS** 1240 x 1240 x 1850mm

TRIPOD-360 | MULTI-USE TRIPOD WITH MAGNETIC PLATE

- Can hold up to 4 work lights
- Extendable height range between 0.9-1.9m
- Work lights with magnets can be placed on top or underneath the top plate
- Toughened aircraft grade aluminium construction
- ABS stability feet to prevent slipping
- One tripod leg has an extra extending feature for uneven ground

- Quick assembly and dismantling using the central screw tightening height adjuster
- Can be used with the following Unilite magnetic site lights: CRI-1900, CRI-3250, SLR-3500 & SLR-5500.
- Can be used with the following site lights when used with the LARGE-MAGNET attachment: CRI-2300, CRI-3350, SLR-4400, SLR-6000, SP-4500, RF-2000, RF-3300, RF-5400 and MTB-5300

WEIGHT 4800g | **DIMENSIONS** 1460 x 1460 x 1930mm

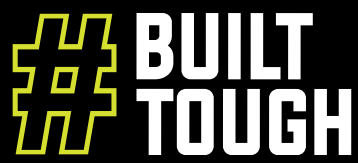



UNILITE





UNILITE







 uniliteuk

 uniliteuk

 uniliteuk

 uniliteuk

 uniliteuk

 unilite

Unilite Limited

The LAB, Moons Moat Drive

Redditch, Worcestershire

B98 9FG - UK

T: 00[44] 1527 584 344

E: sales@unilite.co.uk

W: www.unilite.co.uk